



Training Manual & Installation Guide

01430 430375

www.Revdekltd.com

Table of Contents

- Table of Contents 1
- Introduction 2
- The Revdek System 2
- Testing and Safety Standards 3
- The Revdek Components 4
- Revdek Safety Information 5
 - Revdek Safety Checklist 6
 - Revdek PPE Checklist 6
- Step-by-Step Installation Guide 7
- Loading Information 9
- Dismantling Guidelines 10
- Storage & Transportation 11
- Inspecting Revdek Safety Decking 12
 - Pre-Installation Inspection 12
 - Post-Installation Inspection 12
 - Ongoing/Periodic Inspection 12
 - Post-Dismantling Inspection 13
 - Actions for Non-Conforming Components 13
- Safety Reminders 13
- Routine Inspection Sheet 14



Introduction

Welcome to the official *Revdek Safety Decking Training Manual and Installation Guide*. This manual has been created to provide you with a comprehensive understanding of the Revdek safety decking system—its purpose, components, installation procedures, and best practices for safe and efficient use on construction sites.

Revdek is a robust, lightweight, and easy-to-install safety decking system designed to provide collective fall protection in working-at-height environments, particularly during the early stages of construction. Engineered to exceed current UK safety regulations, Revdek ensures a stable working platform while reducing the risk of falls from height—one of the leading causes of injury in the construction industry.

Developed with input from industry professionals, Revdek offers an innovative, practical solution that enhances site safety without compromising productivity. Its modular design allows for rapid deployment, easy adjustment, and compatibility with a wide range of building layouts and scaffolding configurations.

This manual serves both as a training resource for operatives and a technical guide for site managers and installers. By following the instructions and safety protocols outlined herein, users can ensure correct system assembly, optimal performance, and a safe working environment for all personnel.

The Revdek System

The Revdek Safety Decking System is a high-strength, low-complexity working platform designed to provide collective fall protection during early-stage construction activities such as masonry, timber frame erection, and internal trades. Engineered for quick assembly and maximum reliability, Revdek is one of the most efficient temporary safety platforms available in the UK market.

The system stands out due to its streamlined, four-component design and use of a single standard-sized panel, helping speed up installation, reduce on-site errors, and simplify training and inventory. The system has been rigorously tested and certified to meet UK health and safety standards, making it a trusted choice for site managers and contractors.

Key Features

- ✓ Only four key components for fast and simple install
- ✓ One standard-size panel (1200mm x 900mm) for easy layout and logistics
- ✓ Lightweight yet durable construction
- ✓ Tool-free assembly using locking spring clips
- ✓ Non-slip surface and robust load performance
- ✓ Fully tested and certified to UK safety standards



With its tool-free push-fit collar, minimal component count, and consistent panel sizing, Revdek delivers a practical, fast-deploying, and fully compliant safety decking solution for today's construction environments.

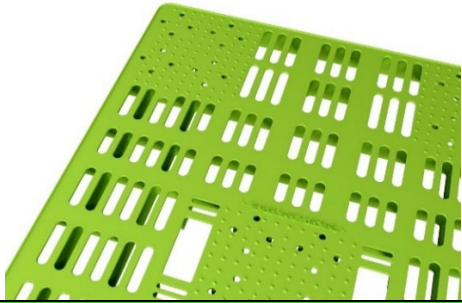



Testing and Safety Standards

The Revdek system is fully certified and tested to meet the following standards:

- ✓ **BS EN 12811-1: Temporary works equipment – Performance requirements and general design**
Verifies structural strength and load capacity of the platform system.
- ✓ **ACR (M) 001:2000 – Test for Non-Fragility of Roof Assemblies**
Revdek panels have achieved a **Class A non-fragility rating**, confirming their ability to safely resist the impact of a person falling onto the platform. This is the highest level of non-fragility under this standard.
- ✓ **Working at Height Regulations 2005 (UK)**
Revdek meets requirements for collective fall prevention systems, helping duty holders comply with UK legislation.
- ✓ **Load Rating:**
Independently tested to **Load Class 2 (2.0 kN/m²)**, suitable for general construction activity.
- ✓ **Anti-Slip Testing:**
Panels are tested for slip resistance under HSE guidance for safe use in wet and dry conditions.



The Revdek Components

Revdek Safety Decking Panel	
	<p>Function: Forms the main working platform surface</p> <p>Size: 1200mm x 900mm rectangular format</p> <p>Features: Anti-slip textured surface Lightweight for safe manual handling</p> <p>Weight: 10.8kg</p>
Revdek Collar	
	<p>Function: Connects and supports the Revdek panel at each corner by attaching to the leg</p> <p>Design: Push-fit connection, no tools required</p> <p>Weight: < 1KG</p>
Revdek Leg	
	<p>Function: Provides vertical support beneath the platform</p> <p>Size: Standard length of 1725mm (1800mm with collars attached). Also available in various lengths</p> <p>Weight: 1.8kg</p>
Revdek Spring Clip	
	<p>Function: Secures the collar and panel to the leg</p> <p>Design: Push-to-lock spring mechanism</p> <p>Benefits: Fast, tool-free securing of components. Prevents accidental dislodging of the platform during use</p> <p>Weight: < 1KG</p>
Wall Brace & Strap	
<p>Wall Brace Function: Lateral support to minimise lateral movement</p> <p>Weight: < 1KG</p>	<p>Strap Function: To secure and fasten down overlapping panels</p> <p>Weight: < 1KG</p>

Revdek Safety Information

Always

- ✓ Only install, dismantle or alter the Revdek safety decking if you are fully trained to do so
- ✓ Visually check the system once installed and each time before you start work on it
- ✓ Inform your supervisor or the site agent immediately if you see a potentially dangerous situation

Never

- ✗ Remove spring clips or straps unless you are dismantling the system and fully trained to do so
- ✗ Alter the Revdek in any way
- ✗ Overload the safety decking, it has a safe working load capacity of 2.0kn/m² uniformly distributed load (UDL)



Revdek Safety Checklist

Before commencing installation of the Revdek safety decking system you should conduct the following checks:

- ✓ Ensure the access route to or from the area of installation/dismantle is clear and safe
- ✓ Ensure the area you are installing/dismantling is clear of debris and materials
- ✓ Ensure the area you are installing/dismantling is safe to work in
- ✓ Communicate with any other trades working near you
- ✓ Ensure the structure of the building is adequate to support the system
- ✓ Ensure you have sufficient components to complete the installation
- ✓ Check all components are in good working order and free from damage
- ✓ Ensure you have the correct PPE and are wearing it in line with instruction
- ✓ If dismantling, ensure the safety decking is clear of materials
- ✓ Never exceed the safe working load of 2.0kn/m² uniformly distributed load (UDL)

Revdek PPE Checklist

When installing or dismantling the Revdek safety decking system you should observe the requirements of personal protective equipment as shown below:

- ✓ Safety Helmet (EN 397 standard)
- ✓ Steel toe-capped footwear (EN ISO 20345 standard)
- ✓ Hi-visibility clothing (EN 471 Class 2 standard)
- ✓ Safety gloves (EN 388 standard)
- ✓ Eye protection when dismantling and passing materials up to the next level (BS EN 166-1 standard)
- ✓ Dust mask when dismantling if there is cementitious material on the safety decking (EN149 FFP3 standard)



Step-by-Step Installation Guide

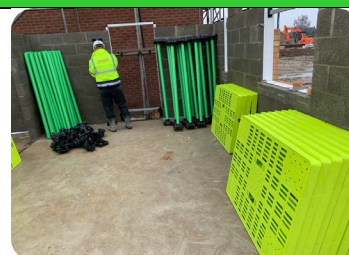
STEP 1 – Prepare the Work Area

Ensure the building / plot is ready and safe to access
 Clear the area of debris, trip hazards, and obstructions.
 Ensure the surface is stable and level.



STEP 2 – Load Out & Connect Collars to Legs

Ensure you have the correct amount of components and all components are inspected for damage prior to installation
 If not already fitted, connect collars to either end of the legs making sure they are fully fitted



STEP 3 – Install the First Panel

Starting in one corner of the room, stand up four legs then lift a panel on to the top of the legs ensuring the collar slides into the panel.



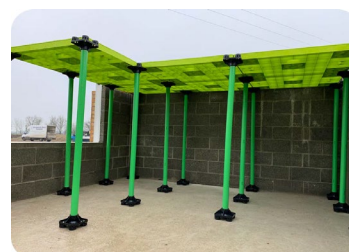
STEP 4 – Install the First Row

Stand up two more legs and repeat step 4 until you have a full row of Revdek spanning the length of the building, applying a wall brace if necessary to aid stability. Alternatively, you may only insert half of the collar locations to push the panel off the wall.



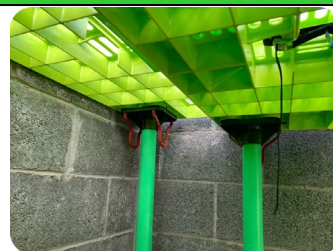
STEP 5 – Continue Until Full Room is Decked

Continue to install the next row of panels in the same direction, joining onto the row that is already in place. Continue this process until the room is fully decked out.



STEP 6 – Overlapping Panels

Overlaps are usually needed to complete the room; in this case a second collar or centre collar should be inserted to the bottom of the leg which will raise the leg to ensure the overlapping panel sits level.



STEP 7 – Fasten down Overlapping Panels

Overlapping panels should be fastened down securely with straps; these are placed at the back of the panel furthest away from where it overlaps the gap. You should ensure that when the straps are tightened, they pull the deck towards the walls leaving the system rigid and free from movement.



STEP 8 – Secure with Spring Clips

Fit two spring clips onto each leg, (one around the boundary of the room if the collar is positioned 'collar out' under the board), to secure the leg to the panel. Wall braces can also be added to secure the decking further; these fit around the edge of the decking pushing against the internal walls.



STEP 9 – Adding Additional Legs

In some circumstances in order to avoid objects, such as sewage/waste pipes, additional legs may be installed to ensure the stability of the decking.



STEP 10 – Inspect the Decking Before Use

Inspect the decking to ensure all components are in place correctly and any surplus components removed.

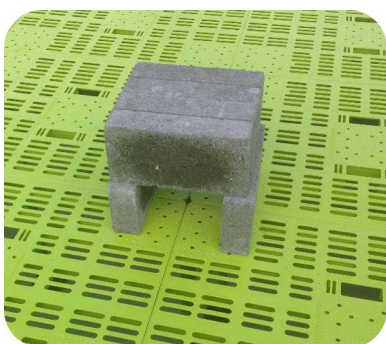
- ✓ Confirm all panels are flat and fully seated in the collars.
- ✓ Ensure all spring clips are in place.
- ✓ Check legs are vertical and securely seated on the ground.
- ✓ Verify platform is free from trip hazards, debris, or gaps.



Loading Information

Ensuring the Revdek system is correctly and safely loaded during installation, use, and dismantling is essential for maintaining structural integrity and preventing injury or damage.

How to Load Safely on Revdek Safety Decking



- ✓ All loading must be positioned as shown, directly over the leg supporting the decking.
- ✓ Blocks should be stacked as shown with two blocks straddling the join of four decking panels.
- ✓ Four further blocks may then be stacked on top turned through 90 degrees.
- ✓ A maximum of six full weight blocks can be stacked in this way.
- ✓ If thermalite blocks are being used then a further four blocks can be stacked on top.

Maximum Load Capacity

- Uniform Load Rating: The Revdek platform is rated for a maximum uniform distributed load (UDL) of 2.0 KN/m².
- Point Loads: Avoid concentrated or point loads. Heavy materials or equipment should be spread evenly across multiple panels to distribute weight safely.

Personnel Load

- The Revdek platform is designed to support multiple operatives and tools during typical construction tasks, as long as the total loading does not exceed system capacity.
- Operatives must avoid jumping, dropping tools, or applying sudden forceful impacts to the panels.

Overloading Risks

Overloading the Revdek system can result in:

- Deck panel deflection or failure
- Dislodgement of components
- Collapse or structural compromise of the working platform
- Injury to personnel and damage to equipment

Dismantling Guidelines

STEP 1 - Checks Before Dismantling

Before dismantling ensure the safety decking is clean and free of any materials or debris that could fall and cause injury when dismantling

Check the safety decking is safe and supported by the wall of the building. If not, the safety decking must be re-secured before any dismantling takes place.

STEP 2 – Dismantling Process

Commence dismantling of the safety decking in the reverse steps as when installed. Ensure that each row is dismantled one at a time and the wall braces and straps are only released on the row you are dismantling.

STEP 3 – Stacking the Safety Decking

When dismantling ground floors, stack components neatly away from work areas, ready to be passed up to the first floor if needed. For upper floors, pass dismantled parts down through a stair hatch, carry them outside, and stack for transport.



Storage & Transportation

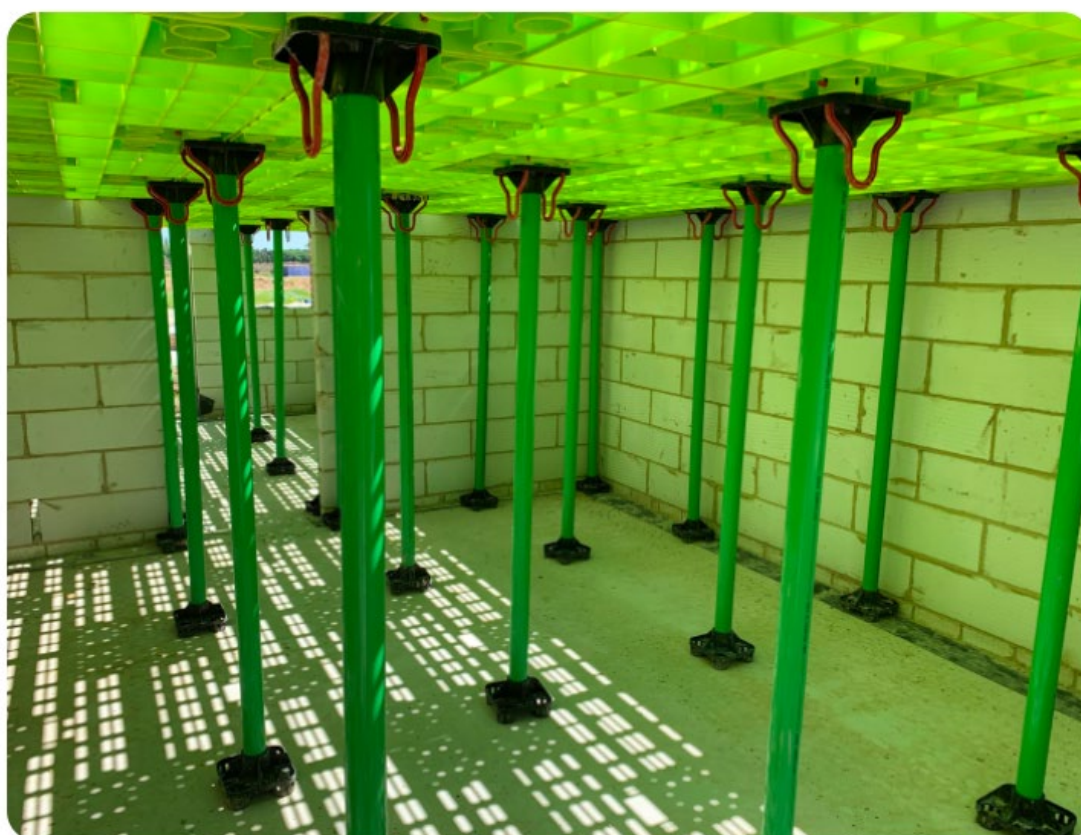
REVDEK PANELS

When preparing materials for transportation either around site or to return to a depot, stack the panels on a pallet uniformly. You should stack no more than 25 panels and tie them with straps to secure as the image shows



REVDEK LEGS

Revdek Legs should be stacked in a stillage neatly and strapped ahead of being moved



Inspecting Revdek Safety Decking

Routine inspection of the Revdek Safety Decking System is critical to ensuring its continued safe use and compliance with industry safety standards. All components must be inspected before installation, after installation, periodically during use, and after dismantling. This section outlines the procedures and criteria for conducting inspections.

Pre-Installation Inspection

Objective: To identify any damaged or defective components prior to assembly.

When: Before each use or re-use of the system.

What to Inspect:

- ✓ **Panels:** Check for cracks, warping, deformation, or heavy wear.
- ✓ **Legs:** Inspect each leg to ensure it is free from bowing, splitting, or kinking along its entire length.
- ✓ **Collars:** Inspect each collar to confirm it is free from splits or cracks. Additionally, ensure the collar is securely fixed to the leg.
- ✓ **Spring Clips:** Check each spring clip to ensure it is not cracked, split, or broken, and that it returns to its original position after being squeezed.
- ✓ **Straps:** Each strap should be checked to ensure it is not worn, frayed or split.

Post-Installation Inspection

Objective: To verify the system is assembled correctly and safely.

When: Immediately after installation and before use.

What to Check:

- ✓ Confirm all panels are flat and fully seated in the collars.
- ✓ Ensure all spring clips are in place.
- ✓ Check legs are vertical and securely seated on the ground.
- ✓ Verify platform is free from trip hazards, debris, or gaps.

Ongoing/Periodic Inspection

Objective: To monitor condition and safety during use.

When: At least once per week and after adverse weather

Inspection Checklist:

- ✓ Confirm that no legs, collars, panels, or other components are missing.
- ✓ Check that the decking has not been tampered with or modified in any way.
- ✓ Ensure all legs are vertical and properly aligned.
- ✓ Verify that all spring clips are fully engaged and present beneath each panel.
- ✓ Make sure all straps and wall braces are securely fastened.
- ✓ Confirm the system is stable, with no movement, and properly braced against the building walls.

Post-Dismantling Inspection

Objective: To assess damage during use and determine component reusability.

When: Immediately after dismantling and before storage.

What to Inspect:

- ✓ Check all components for damage sustained during use or removal.
- ✓ Set aside any parts showing visible deterioration for quarantine and reporting.
- ✓ Clean components of debris or contaminants before storage.

Actions for Non-Conforming Components

- **Remove** any defective components from service immediately.
- **Label** and **quarantine** damaged parts in a designated area.
- **Report** the fault to the site supervisor or safety officer.
- **Do Not Repair** any components on-site
- **Replace** any non-conforming items with certified Revdek components only.



Safety Reminders

- ⚠ Never use damaged or deformed components.
- ⚠ Never exceed the load rating (2.0 KN/m² – Load Class 2).
- ⚠ Do not modify the system or substitute components.
- ⚠ Only install to manufacturer instructions

PLEASE CHECK WITH REVDEK LTD IN THE EVENT OF UNCERTAINTY

Routine Inspection Sheet

Pre-Installation Inspection

Inspection Item	Pass	Fail	N/A
Panels – no cracks, warping, deformation or heavy wear			
Legs – no bowing, splitting or kinking			
Collars – no splits or cracks and securely fixed			
Spring clips – intact and return to position			
Straps – not worn, frayed or split			

Post-Installation Inspection

Inspection Item	Pass	Fail	N/A
Panels flat and fully seated in collars			
Spring clips present and engaged			
Legs vertical and seated on firm ground			
Platform free from debris and trip hazards			

Ongoing / Weekly Inspection

Inspection Item	Pass	Fail	N/A
No missing components			
System not modified or tampered with			
All legs vertical and aligned			
Spring clips engaged under all panels			
Straps and wall braces secure			
Deck stable and correctly braced			

Post-Dismantling Inspection

Inspection Item	Pass	Fail	N/A
No damage during use or removal			
Damaged items quarantined			
Components cleaned before storage			

Actions for Non-Conforming Components

- Remove defective components from service immediately
- Label and quarantine damaged items
- Report the fault to the site supervisor or safety officer
- Do not carry out on-site repairs
- Replace and non-conforming items with certified Revdek Components only