

SafetyDeck

User Guide

TABLE OF CONTENTS

1. INTRODUCTION TO SAFETY DECK SYSTEM
2. DO'S AND DON'T'S
3. PRE-INSTALLATION SAFETY CHECKLIST
4. PPE REQUIREMENTS
5. PRODUCT & COMPONENTS
6. PRE-START INSPECTIONS
7. INSTALLATION GUIDELINE
8. DISMANTLING GUIDELINES
9. HANDOVER & INSPECTIONS
10. SafetDeck Inspection and report templates (ref only)

1) INTRODUCTION TO SAFETYDECK

The fast install, safe working platform for house builders

In the construction industry, falls are the largest cause of accidental death accounting for 50% of all fatalities. If the correct measures are not taken according to the Work at Height Regulations 2005, a person working at height could fall causing personal injury and possibly liability for a claim.

Where working at height is unavoidable, it is essential to use a collective system for fall prevention. SafetyDeck is an innovative working platform and fall prevention decking solution for building projects. SafetyDeck is significantly quicker to erect and dismantle and provides a safe working environment compared to traditional methods.

SafetyDeck requires no maintenance and is ideal for all trades in any weather all year round. With its robust design and high-quality build, SafetyDeck provides a full, safe, and unobtrusive working area, giving maximum freedom of movement.

SafetyDeck can be installed at a rate of up to 60m² per hour. This is much quicker than traditional solutions, such as birdcage scaffolding. SafetyDeck also provides a level of adaptability which is lacking from alternatives. Having undergone rigorous independent testing in accordance with BS EN 12811-1 Part 3, SafetyDeck can be installed as a lightweight working platform with a safe working load of 2kN/m². This level of versatility enables our customers to choose a system which works best for them and their build programme.

SafetyDeck complies with the Work at Height Regulations 2005, where employers and those in control of any work at height activity must ensure the correct type of equipment is being used for safety.

2) DO'S AND DON'T'S

ALWAYS

Read user guide and familiarise yourself with the product and capabilities prior to use

Only a trained and competent person to, install, dismantle, or alter system

Ensure the product is fit for purpose prior installation

Ensure you work to your safe systems of work

Always consult your supervisor of any potential risk or intended change of use

Provide final inspection prior to handover

NEVER

Mix components of Safety Deck systems

Remove components or alter system whilst, loaded or in use

Overload or use the SafetyDeck system other than for its intended use

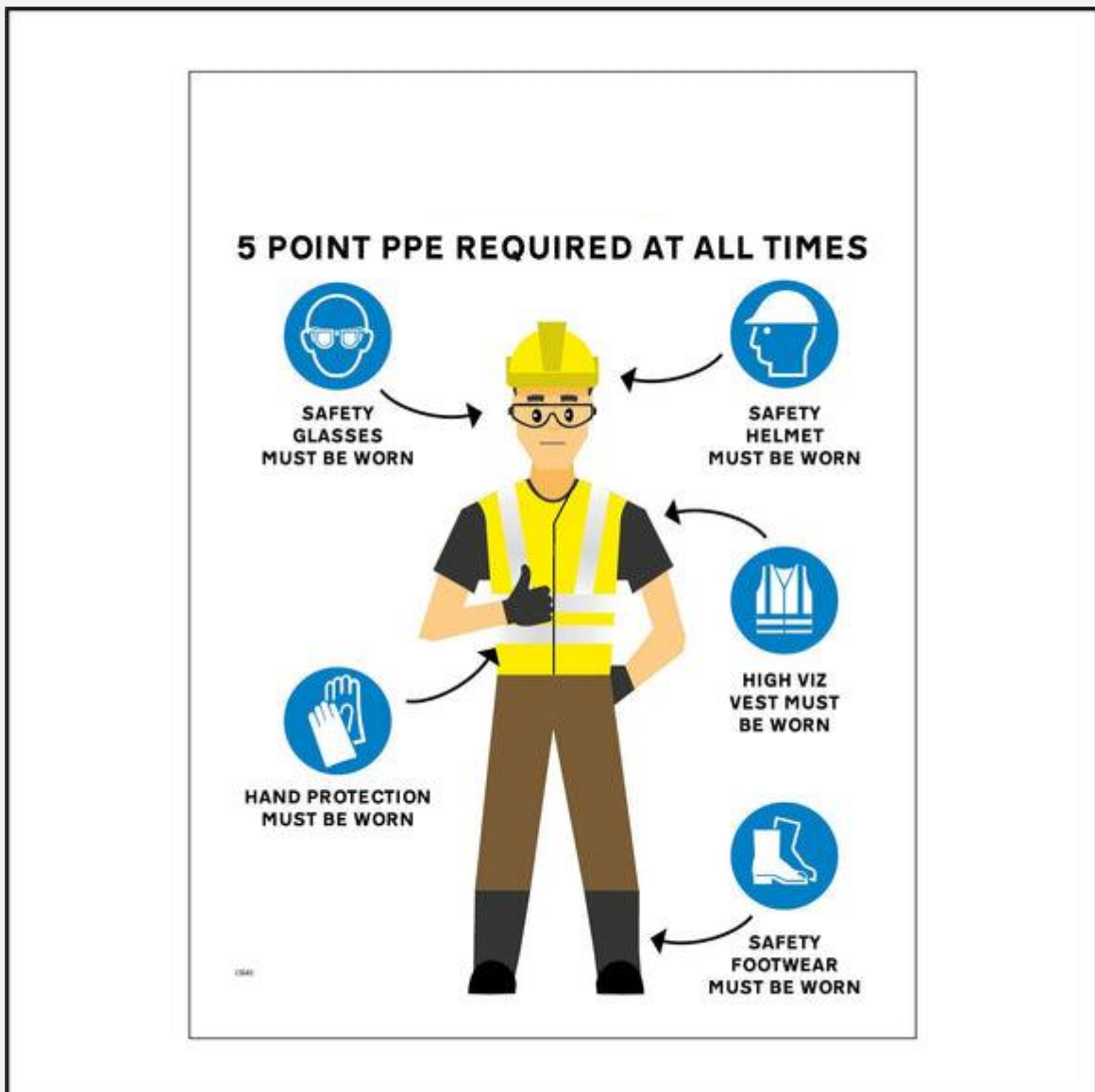
3) PRE-INSTALLATION CHECK LIST

Prior commencing installation of the SafetyDeck system, please conduct the following checks.

- Ensure the SafetyDeck system is fit for its intended purpose, will be installed at the correct height, not exceeding recommended safe working load.
- Ensure the work area is safe to work in and you have good access and egress.
- Ensure you have reviewed and signed your works specific Risk Assessments and Method Statements (RAMS)
- Ensure you are wearing the correct PPE
- Ensure the area is clear of debris, materials, and any other potential slip/trip hazards.
- Ensure the structure of the building provides adequate support for the system.
- Ensure you have all necessary components to complete the installation.
- Complete a visual check with each component, ensuring each component is free of defects.

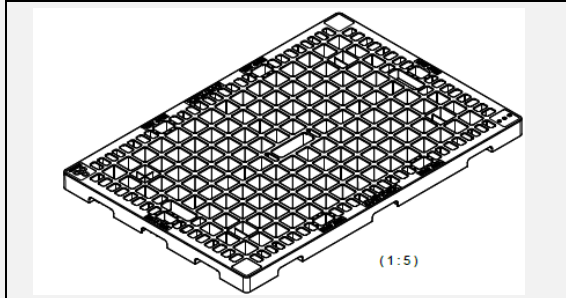
4) PPE REQUIREMENTS

Correct PPE should be always worn when installing or dismantling the safety deck system.



5) PRODUCT & COMPONENTS

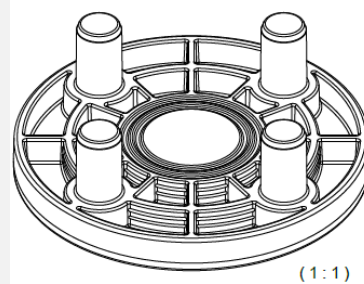
A



SafetyDeck Platform panel Black

Dimensions: 1200x800x60mm
Weight: 8.5kg

B



SafetyDeck Flange

Dimensions: 160mm x 75mm
Weight: 0.25kg

kg

C



SafetyDeck Leg

1.9m x 61mm, 2.5kg

D



SafetyDeck Cam Strap

25mm x 580mm with cam buckle

E



SafetyDeck Bungee Shock Cord

450mm x 5mm

6) PRE-START INSPECTIONS

Prior to commencement of works, all SafetyDeck components must be inspected for defects. If defects are present than item should be clearly identified as defective. Item must be removed from service and quarantined.

ITEM	INSPECTION DETAILS
SafetyDeck Panel	Visually check each panel for cracks, splits, and excessive bowing.
Flange	Visually check each flange, ensure each location pin is present, secure and no cracks or splits
Support legs	Visually inspect for bowing, cracks or splits
Cam Strap	Visually inspect for excessive wear or fraying and cam buckle is in good working order.
Bungee shock cord	Visually inspect for excessive wear or fraying.
<p>Due to the working environment, it is expected some components may have glue residue or cement on them. If excessive, please clean prior to inspection</p>	

7) INSTALLATION GUIDE

STAGE 1

Ensure the area is ready and safe to access, clear of debris, material and supporting walls are adequate for use.



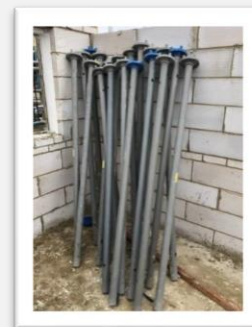
STAGE 2

Load out the area with required decking components.
Distributing decking components for ease of installation
Continue to inspect components when loading out.



STAGE 3

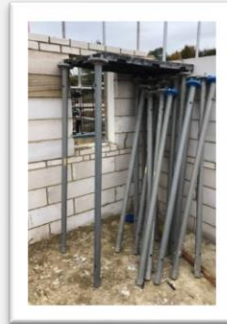
Fit flanges to top end of leg (push fit) and stand upright ready for the first Panel



7) INSTALLATION GUIDELINES

STAGE 4

Starting in one corner, place SafetyDeck panel on first two Legs, ensuring the location pins are, positioned into the panel correctly. Lift other end of panel and place next two legs into panel, once again, ensuring locating pins are in correct position and secure.



STAGE 5

Place next SafetyDeck panel on the available location pin of the previous leg and continue until the first row is complete.

Apply a wall brace to aid with stability if required.



STAGE 6

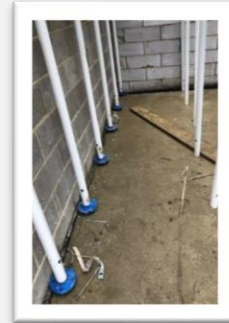
Continue to install next row of panels in same direction, joining onto the row that is already in place. Continue this process until the area is fully decked.



7) INSTALLATION GUIDELINES

STAGE 7

Overlays are usually required to complete an area. In this case, a second flange is inserted (push fit) on bottom of leg to raise the panel, ensuring this sits level.



STAGE 8

At each leg, loop a SafetyDeck bungee cord, though and over the panels and insert each end into the key slot provided on each leg.



STAGE 9

Fasten all panels together using the SafetyDeck cam strap. Loop through the slots provided (x2 long side, x1 short side) tighten and secure.

For overlays, ensure these are placed at the back, furthest away from where it overlaps the gap of the panel. Ensure when tightened, the panel is pulled into the wall, ensuring the system is rigid and free from movement



7) INSTALLATION GUIDELINES

STAGE 10

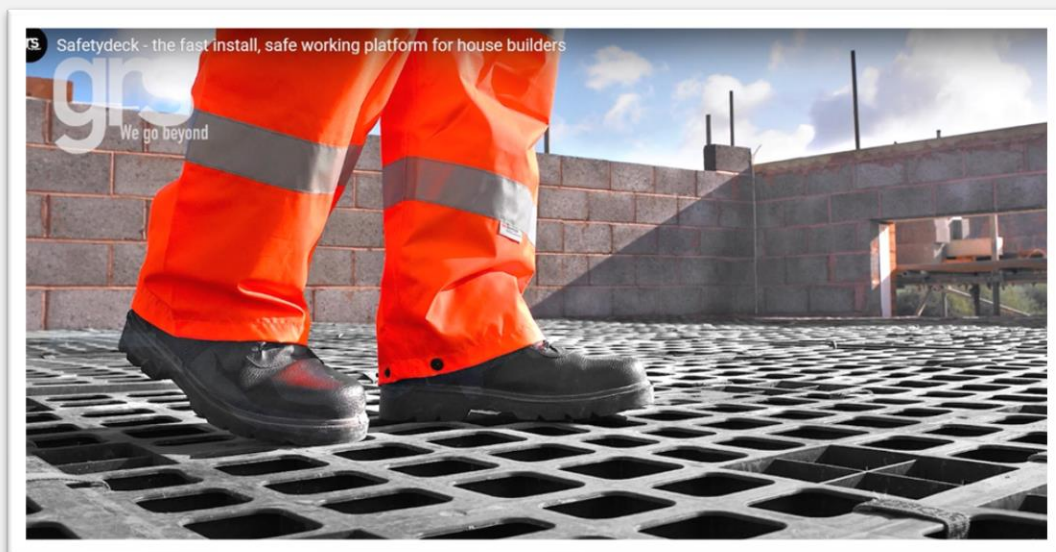
Inspect your installation to ensure all components are correctly fitted and secure and system is free from movement.



PLEASE CHECK WITH, GRS SAFETYDECK IN THE EVENT OF
UNCERTAINTY

WWW.SAFETYDECK.CO.UK

0300 373 1866



8) DISMANTLING GUIDLINES

STAGE 1

Prior dismantling of the SafetyDeck system, carry out a full inspection and ensure it is clean, free of any material or debris that could fall and cause injury when dismantling.

Note any damages caused from use of system and report to supervisor.

STAGE 2

Check the SafetyDeck system is safe and supported by the supporting walls of the building before dismantling.

STAGE 3

Commence dismantling of the SafetyDeck system in the reverse order to the stages as installed. Ensure that each row is dismantled one at a time.

9) HANDOVER & INSPECTIONS

The SafetyDeck decking system is not indestructible. The integrity and effective use of the system relies upon it being correctly fitted and inspected at regular intervals by a trained and competent person, as detailed below.

Handover Inspection

An initial handover inspection shall be conducted by the team fitting the system and a walk round with site agent to explain use, any maintenance and future inspection requirements as detailed below.

Daily Inspection

Each system shall undergo a daily inspection by the user prior to use. This is to ensure that it is fit for purpose and in accordance with manufactures installation guide.

Weekly Inspections

The system and components shall be inspected every seven days, after any incident, alterations, or adverse weather conditions where structural integrity may be compromised.

Inspections must be conducted by a competent person and recorded.

If the system, has been found to be defective or it has been altered in any way, the system shall undergo a full new formal handover.

Templates of SafetyDeck Inspection check list and report log on following pages.

PLEASE CHECK WITH GRS SAFETYDECK IN THE EVENT OF UNCERTAINTY.

WWW.SAFETYDECK.CO.UK

0300 373 1866

SAFETYDECK INSPECTION CHECK LIST

Company name:	Site/project		
SYSTEM DETAILS			
1.8m	1.9m	2.0m	

Area of inspection

Item	Inspection details	YES	NO	Comments/Action required
1	The system been fitted/erected by a trained and competent person			
2	Are all components in place and have no signs of interference or defects			
3	SafetyDeck system is free of movement and has adequate support on all 4 sides.			
4	The whole area required is covered by the SafetyDeck system			
5	Voids no greater than 100mm			
6	Decking is level including any overlaps			
7	All legs are vertical/plumb and free of defects			
8	All straps are in place and tightened. (2 no longer side, 1 no short side)			
9	All legs secured to panels by SafetyDeck shock cord (1no per leg)			

Additional Notes

By signing the below, I confirm I have inspected and satisfied with the SafetyDeck system provided, understand the terms of the use, and will ensure that guidelines of use and inspections are adhered to as per SafetyDeck terms and conditions, and Work at Height Regulations 2005. All terms and conditions can be found on the quotation or via our website; www.safetydeck.co.uk

Inspection Sign off:	
Print name:	Signature:
Position	Date

SafetyDeck inspection report log.

The below is a log of the inspections completed, for full inspection details, please refer to SafetyDeck Fall Prevention Inspection Checklist

Company Name		Project title	
Location		Contract No	

Date of Inspection	Plots/Area of inspection	Inspected by	Position	Comments

