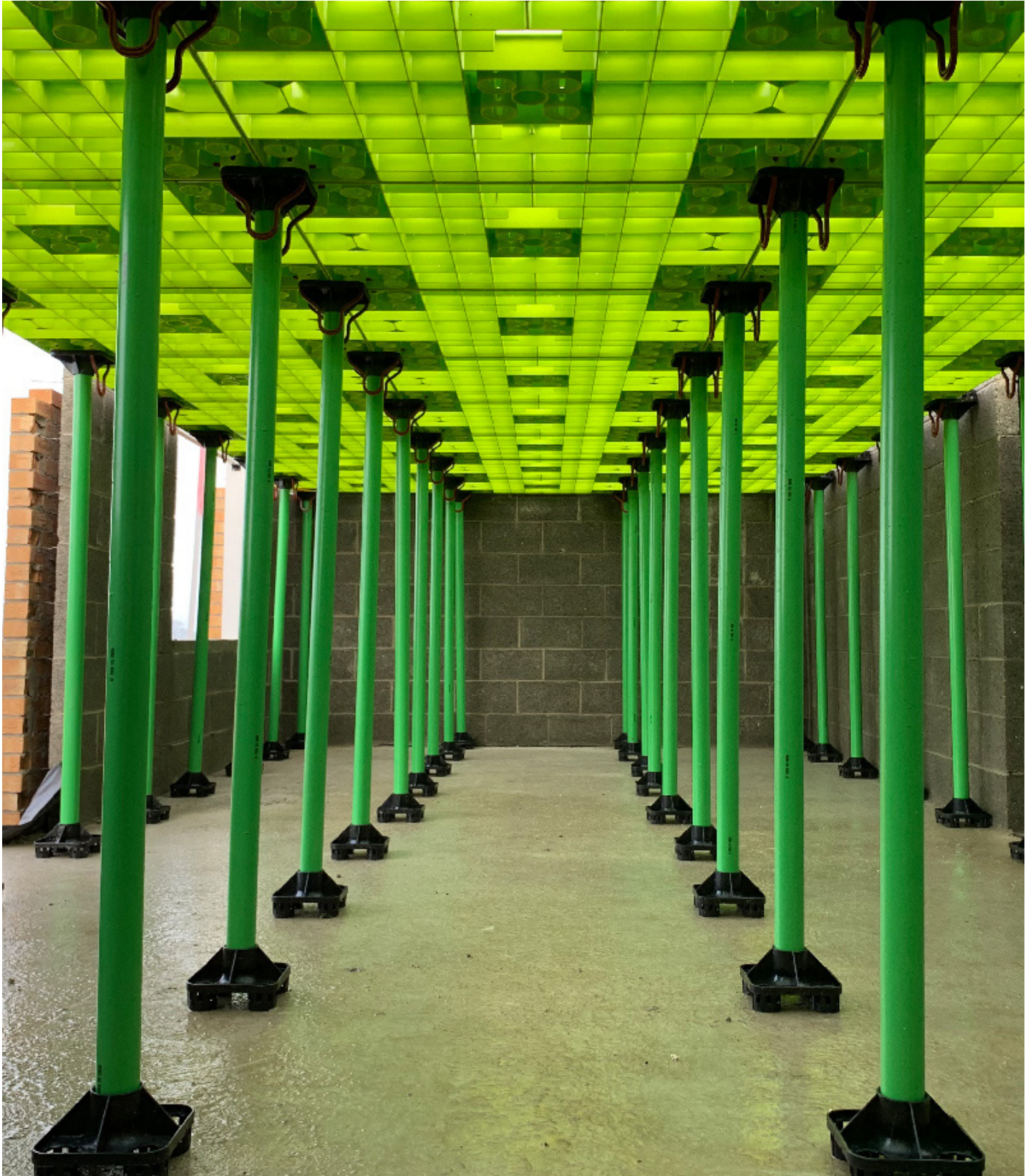


# REVDEK

THE SAFETY DECKING REVOLUTION

[WWW.REVDEKLTD.COM](http://WWW.REVDEKLTD.COM)



## TRAINING MANUAL & INSTALLATION GUIDE

# TABLE OF CONTENTS

- 2 INTRODUCTION TO REVDEK & SAFETY INFORMATION
- 3 SAFETY CHECKLIST & PPE CHECKLIST
- 4 COMPONENT PARTS
- 5 REVDEK DEFECT IDENTIFICATION
- 6 INSTALLATION GUIDELINES
- 7 INSTALLATION GUIDELINES
- 8 INSTALLATION GUIDELINES
- 9 DISMANTLING GUIDELINES
- 10 INSPECTION

# INTRODUCTION TO REVDEK

The Revdek safety decking platform is the newest, most innovative, and strongest injection moulded fall prevention system available on the market. We haven't simply replicated what already exists, we have designed and developed a new product and begun a safety decking revolution ...

The Revdek Team have over 25 years combined experience working with safety decking systems and so have been able to develop a safety decking system with a number of new, unique and revolutionary features. The unique Revdek panel, collar and spring clip have an innovative design which allows swift installation of the system. The unique and innovative components of the Revdek system mean overall installation is quicker and easier than other systems on the market and also fewer components are required.

Revdek is lightweight and ergonomically friendly, with only four main components; and only one size panel unlike other systems available. The Revdek panel is rectangular in shape and 1.08m<sup>2</sup> meaning fewer panels are required than other 1.00m<sup>2</sup> panel systems. Overall this means that fewer components are required.

Whatever the scale of installation required, Revdek allows the flexibility for your team to assemble the system regardless of the layout of the plot. The lightweight panels conform to the manual handling regulations and can be easily moved into and out of plots. There is also a Revdek stair access hatch available to allow site teams to easily move components between floors.

The Revdek panel has been independently tested and meets BS EN 12811-1 Part 3 (for structural integrity and safety factor, for use as a General Purpose Working and Safety Platform). The Revdek panel has a uniformly distributed load (UDL) capacity of 3.0kN (300kg) per m<sup>2</sup>, therefore making the Revdek system stronger and safer than all other plastic systems on the market. The Revdek fall prevention system has also been tested against the roof non-fragility test in accordance with ACR (M) 001:2000.

## REVDEK SAFETY INFORMATION

### ALWAYS

- Only install, dismantle or alter the Revdek safety decking if you are fully trained to do so
- Visually check the system once installed and each time before you start work on it
- Inform your supervisor or the site agent immediately if you see a potentially dangerous situation

### NEVER

- Remove spring clips or straps unless you are dismantling the system and fully trained to do so
- Alter the Revdek in any way
- Overload the safety decking, it has a safe working load capacity of 3.0kn/m<sup>2</sup> uniformly distributed load (UDL)

## REVDEK SAFETY CHECKLIST

Before commencing installation of the Revdek safety decking system you should conduct the following checks:

- ☑ Ensure the access route to or from the area of installation/dismantle is clear and safe
- ☑ Ensure the area you are installing/dismantling is clear of debris and materials
- ☑ Ensure the area you are installing/dismantling is safe to work in
- ☑ Communicate with any other trades working near you
- ☑ Ensure the structure of the building is adequate to support the system
- ☑ Ensure you have sufficient components to complete the installation
- ☑ Check all components are in good working order and free from damage
- ☑ Ensure you have the correct PPE and are wearing it in line with instruction
- ☑ If dismantling, ensure the safety decking is clear of materials
- ☑ Never exceed the safe working load of 3.0kn/m<sup>2</sup> uniformly distributed load (UDL)

## REVDEK PPE CHECKLIST

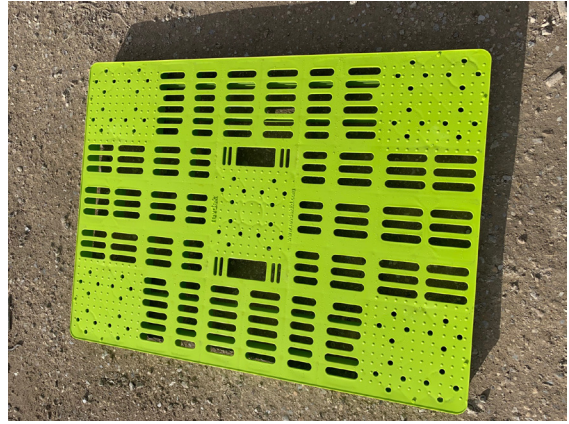
When installing or dismantling the Revdek safety decking system you should observe the requirements of personal protective equipment as shown below:

- Safety Helmet (EN 397 standard)
- Steel toe-capped footwear (EN ISO 20345 standard)
- Hi-visibility clothing (EN 471 Class 2 standard)
- Safety gloves (EN 388 standard)
- Eye protection when dismantling and passing materials up to the next level (BS EN 166-1 standard)
- Dust mask when dismantling if there is cementitious material on the safety decking (EN 149 FFP3 standard)





REVDEK SPRING CLIP  
<1KG



REVDEK PANEL  
10.8KG



REVDEK COLLAR  
<1KG



REVDEK STRAP  
<1KG



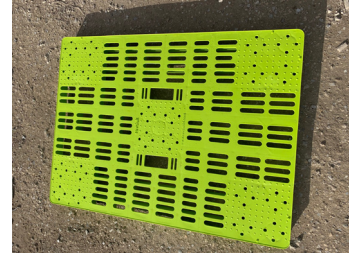
REVDEK LEG  
1.8KG

# REVDEK DEFECT IDENTIFICATION

Prior to the installation of the Revdek safety decking system all components should be inspected. The guidance is intended to offer reasonable and practicable information to assist with the identification of defective components:

## Panels

Each safety decking panel should be checked to ensure there are no splits or cracks. If damage is present, then the panel should be removed from service and quarantined.



## Collars

Each collar should be checked to ensure there are no splits or cracks. If damage is present, then the collar should be removed from service and quarantined. You should also ensure the collar is firmly attached to the leg.



## Legs

Each leg should be checked to ensure it is not bowed, split, or kinked along its length. If damage is present, then the leg should be removed from service and quarantined.



## Spring Clips

Each spring clip should be checked to ensure it is not cracked, split or broken and that it returns to position once squeezed. If damage is present, then the spring clip should be removed from service and quarantined.



## Straps

Each strap should be checked to ensure it is not worn, frayed or split. If damage is present, then the strap should be removed from service and quarantined.



## Wall Brace

Each wall brace should be checked to ensure it is not cracked, split or broken. If damage is present, then the spring clip should be removed from service and quarantined.

**NOTE:** This list is not exhaustive and is intended to offer reasonable and practicable information to assist with identification of defective components. If you are in any doubt as to the integrity of the safety decking system or any component parts you should seek advice from the Revdek safety decking team.

# INSTALLATION GUIDELINES

After reviewing your Risk Assessment and Method Statement (RAMS) and your material has been safely loaded out to your work area, follow the instructions below:

## STEP 1

Ensure the building/plot is ready and safe to access, and clear of any debris and materials.



## STEP 2

Load out the room whilst working out what components are required for the full installation. Components should also be inspected as they are being loaded into the building prior to installation.



## STEP 3

If not already fitted, connect collars to either end of the legs making sure they are fully fitted.



## STEP 4

Starting in one corner of the room, stand up four legs then lift a panel on to the top of the legs ensuring the collar slides into the panel.



# INSTALLATION GUIDELINES

## STEP 5

Stand up two more legs and repeat step 4 until you have a full row of Revdek spanning the length of the building, applying a wall brace if necessary to aid stability.

Alternatively you may only insert half of the collar locations to push the panel off the wall.



## STEP 6

Continue to install the next row of panels in the same direction, joining onto the row that is already in place, continue this process until the room is fully decked out.



## STEP 7

Overlaps are usually needed to complete the room, in this case a second collar or centre collar should be inserted to the bottom of the leg which will raise the leg to ensure the overlapping panel sits level.



## STEP 8

Overlapping panels should be fastened down securely with straps, these are placed at the back of the panel furthest away from where it overlaps the gap. You should ensure that when the straps are tightened, they pull the deck into the walls leaving the system rigid and free from movement.





# INSTALLATION GUIDELINES

## STEP 9

Fit two spring clips onto each leg, to secure the leg to the panel. Wall braces can also be added to secure the decking further. These fit around the edge of the decking pushing against the internal walls.



## STEP 10

Inspect your installation to ensure all components are in place correctly



**PLEASE CHECK WITH REVDEK SAFETY DECKING IN THE  
EVENT OF UNCERTAINTY**

**[WWW.REVDEKLTD.COM](http://WWW.REVDEKLTD.COM)**

**01430 430 375**

# DISMANTLING GUIDELINES

## STEP 1

Before dismantling ensure the safety decking is clean and free of any materials or debris that could fall and cause injury when dismantling.

## STEP 2

Check the safety decking is safe and supported by the wall of the building. If not, the safety decking must be re-secured before any dismantling takes place.

## STEP 3

Commence dismantling of the safety decking in the reverse steps as when installed. Ensure that each row is dismantled one at a time and the wall braces and straps are only released on the row you are dismantling.

## STEP 4

When dismantling ground floors they can be stacked away tidily from any working area ready to be passing up, where applicable, to the first floor once required. When dismantling upper floors, once dismantled they should be passed down through a stair hatch and walked outside then stacked ready for movement.

# STORAGE AND TRANSPORTATION

## REVDEK PANELS

When preparing materials for transportation either around site or to return to a depot, stack the panels on a pallet uniformly. You should stack no more than 25 panels and tie them with straps to secure as the image shows.



## REVDEK LEGS

Legs should be stacked in a stillage neatly and strapped ahead of being moved.



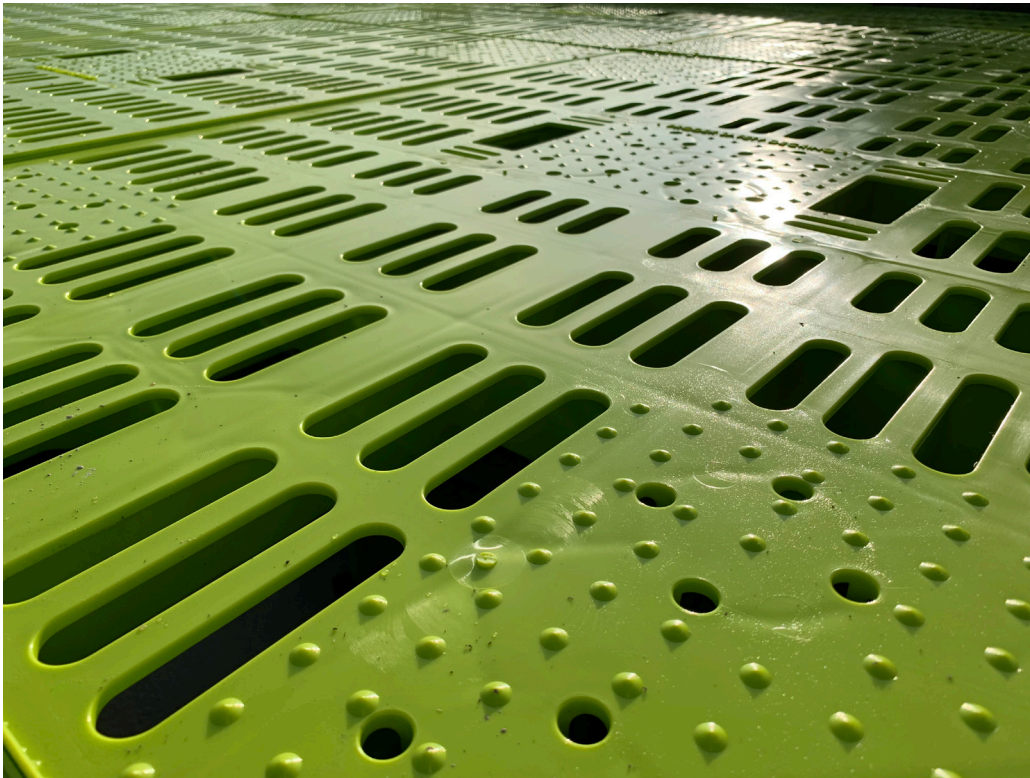
# INSPECTION

Inspecting the Revdek safety decking system

The following guidance is intended to offer reasonable and practicable information to assist with the inspection of the Revdek safety decking system:

- Ensure no legs, collars, panels or other components have been removed.
- Ensure decking has not been interfered with or altered in any way.
- Ensure all legs are plumb and vertical.
- Ensure all spring clips are fully located and present under all panels
- Ensure that straps and wall braces are securely fastened
- Ensure there is no movement of the system and it is securely braced off the walls of the building

The Revdek safety decking system is not indestructible and will fail if abuse and misuse goes unreported. It is recommended that the safety decking system is visually checked on a daily basis prior to being used, and inspected on a weekly basis by a competent person. The safety decking should also be fully inspected after adverse conditions, such as over loading, impact, bad weather and unsafe working practises.



**PLEASE CHECK WITH REVDEK SAFETY DECKING IN THE  
EVENT OF UNCERTAINTY**

**[WWW.REVDEKLTD.COM](http://WWW.REVDEKLTD.COM)**

**01430 430 375**

**[CHRIS@REVDEKTLTD.COM](mailto:CHRIS@REVDEKTLTD.COM)**