



J.MAC
SAFETY SYSTEMS

MACDECK USER GUIDE

DESIGNED BY SCAFFOLDERS,
FOR SCAFFOLDERS

WWW.JMACSAFETYSYSTEMS.CO.UK



YOUR SAFETY OUR VISION

JMAC Safety Systems offers total fall safe solutions for working at heights. We are a UK market leader in the design, manufacture, supply and installation of fall safety solutions for the building, construction and maintenance industries.

We are a UK market leader in the design, manufacture, supply and installation of fall safety solutions for the building, construction and maintenance industries

CONTENTS

01. ABOUT US	04
02. STORAGE OF MATERIALS	12
03. BOOKING IN PROCEDURES	16
04. PRE-START INFORMATION	17
05. INSTALLATION / DISMANTLE GUIDE	30
06. INSPECTION PROCEDURE	36
07. HANDOVER PROCEDURE	37
08. LOADING INFORMATION	40
09. ACKNOWLEDGEMENT DECLARATION	43

ABOUT MACDECK



STABLE AND SECURE



UNIQUE DESIGN



CONFIDENCE IN
ALL WEATHER
CONDITIONS

YOUR SAFETY OUR VISION



INTRODUCTION

JMAC Safety Systems offers total fall safe solutions for working at heights. We are a UK market leader in the design, manufacture, supply and installation of fall safety solutions for the building, construction and maintenance industries.

The company has been built out of a love of all things scaffolding and construction with the realisation that safety in the workplace is paramount.

As a result of this, we have designed and built a new lightweight working platform called MACDECK, which allows the user to work at height in complete safety. You can view our Macdeck installation video by clicking [HERE](#).



Use On All Major
Scaffolding
Systems



Unique
Personalised
Branding



Extra Stability &
Security



ALWAYS CHECK PRIOR TO USE

A visual inspection of the MacDeck needs to be carried out for any defects or damages. Following a visual inspection if you identify any damages or defects - do not use, take out of action and quarantine the item immediately until further inspection has been carried out as per manufacturers guidelines & instructions.



JMAC Safety Systems product liability only applies to the Macdeck System when installed as per the manufacturers guidelines and instructions.



If the Macdeck System is overloaded or subject to large vertical impact the system must be replaced.



The Macdeck internal fall protection system meets BS EN 12811-1 Part 3 (for structural integrity and safety factor, for use as a General Purpose Working and Safety Platform) and satisfies the roof non-fragility test in accordance with ACR (M) 001:2000.

We have carried out robust and rigorous testing over and above the British standards specifications to ensure the absolute safety & durability.



Contact JMAC Safety Systems in the event of uncertainty.



As our tagline states, your safety is our vision, and we stand by this ethos at every stage of our process. This includes examples such as implementing our rigorous testing regime to ensure we not only comply with UK Health & Safety regulations but surpass them too, manufacturing a system which boasts a load capacity of 2.0kn per m² and creating the strongest injected moulded panel manufactured worldwide.



OVERVIEW

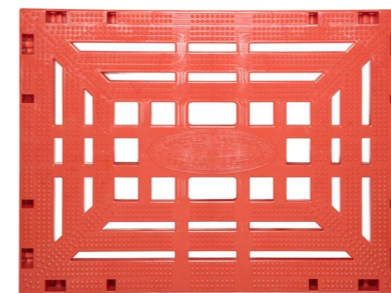
DESIGNED BY SCAFFOLDERS, FOR SCAFFOLDERS.

MacDeck has a dual locking pin safety feature, which can be viewed from above to show the system is locked correctly.

MacDeck is made up of 3 basic components comprising of Panel, Leg and Base & Head. MacDeck can receive party wall scaffolds while still in situ saving time and costs. MACDECK can have client's logo and name printed on the panels for sales purposes.

MacDeck has a non-slip surface.

MacDeck with only three main components it's quicker to erect than a traditional birdcage scaffold with up to 60m2 per hour being erected or dismantled; the system also takes up less storage space on site.



The MacDeck internal fall protection system meets BS EN 12811-1 Part 3 (for structural integrity and safety factor, for use as a general purpose working and safety platform)

FEATURES

YOUR SAFETY, OUR VISION

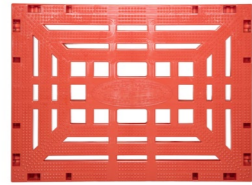
MacDeck is the first successful injection moulded panel and safety decking system which allows a specialist scaffold to be constructed through it while still in place, thereby reducing costs and increasing productivity.

MacDeck provides an exceptionally safe working platform for operatives working at height. Its unique design and manufacture exceed the current safety regulations and standards laid down by the UK Health & Safety Executive.

The system has undergone rigorous testing at all stages from design to manufacture. **MacDeck** can be loaded to a maximum of 2.00kN/m2. It has a profiled non-slip surface for improved grip and its bright orange colour is highly visible.

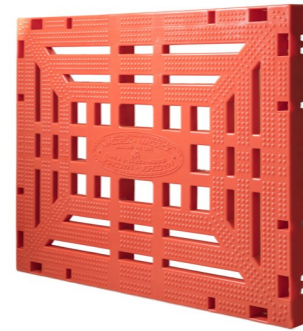
COMPONENTS

MACDECK PANEL



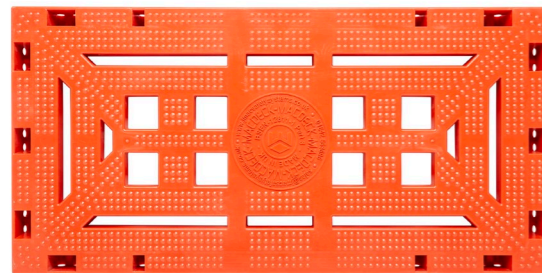
CODE	SIZE	WEIGHT
MAC 305	1.0M X 1.0M	10KG

MACDECK PANEL



CODE	SIZE	WEIGHT
MAC 310	1.0M X 0.75M	8KG

MACDECK PANEL



CODE	SIZE	WEIGHT
MAC 315	1.0M X 0.5M	6KG

LEGS



CODE	SIZE	WEIGHT
MAC 025	2.0m	1.5kg
MAC 027	1.8m	1.35kg
MAC 024	1.5m	1.2kg

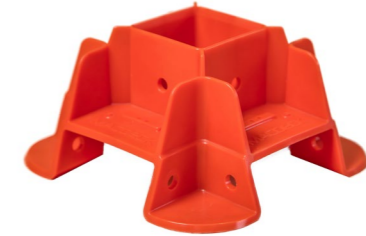
COMPONENTS

PINS



CODE	SIZE	WEIGHT
MAC 201	N/A	0.25g

BASE & HEADS



CODE	SIZE	WEIGHT
MAC 200	N/A	350g

EXTENDABLE LEG KIT



CODE	SIZE	WEIGHT
MAC 028	1.8m - 3.0m	TBC

CAMSTRAPS



CODE	SIZE	WEIGHT
MAC 140	100cm	0.5kg

*The kit consists of 1 x black inner leg, 1 x orange outer leg, 2 x base & head units, 1 split pin, 1 height adjusting pin

COMPONENTS

STORAGE STILLAGE FOR LEGS



CODE	SIZE	WEIGHT
MAC285	40" x 40"	35kg

BANDER & CORD STRAP



CODE	SIZE	WEIGHT
MAC800	One Size	1.3kg
MAC801	19mm	N/A

PANEL STILLAGE



CODE	SIZE	WEIGHT
MAC290	1.3m x 2.02m	78KG

FASTENING BUCKLES



CODE	SIZE	WEIGHT
MAC802	19MM	N/A



MACDECK

**YOUR SAFETY
OUR VISION**

Macdeck provides a safe solution for working at height, allowing you to work in confidence knowing you have the strongest safety platform under your feet. Macdeck provides a robust working platform which takes care of your operatives' safety, helping them work more efficiently on a profiled non-slip surface with high visibility. The system also comes with a dual locking pin safety feature which can be viewed from above to show that the system is locked correctly.

STORAGE OF MATERIALS

Legs - Are to be stacked in rows of seven allowing 102 legs per stillage.

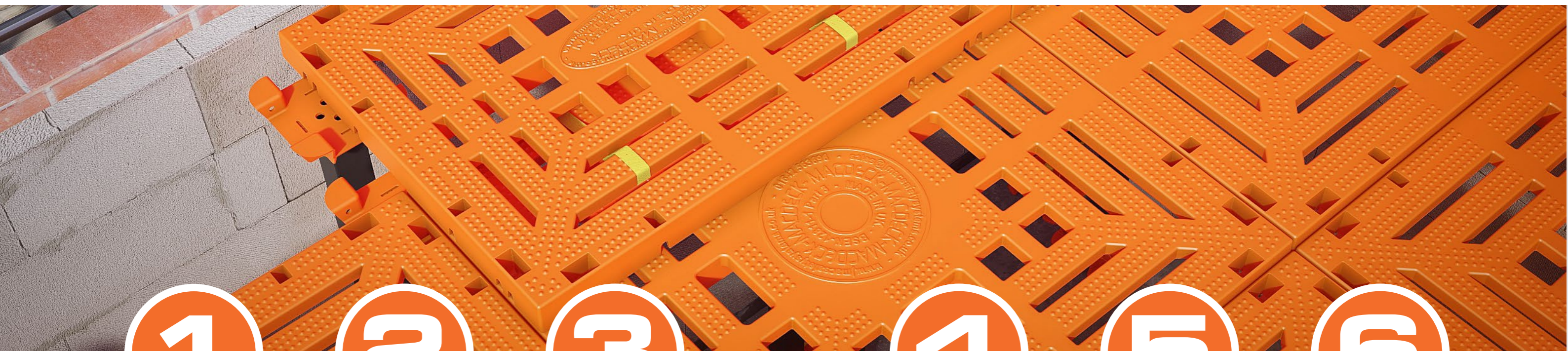
Panels - The preferred storage methods for MacDeck panels would be the panel decking stillage, this stillage stores 16 panels on each side. Stillages can be triple stacked to save space onsite, alternatively panels can be stacked in rows of 25 high on a pallet. These can then be secured using the banding tensioning tool & cord strap.

Pins - Pins are to be transported and moved to plots via storage containers provided e.g. scaffolding bin, mixing bath or equivalent.

Camstraps - Are supplied by the install teams on erection of plots on a supply & fit basis.

Stillages - JMAC stillages are easily identifiable as they are painted orange.

Banding Equipment - Each vehicle is supplied with banding equipment and JMAC materials must be banded before materials are moved around site.



1

JMSS prior to attending Site

Required works should have been booked in and confirmed via email.

2

JMSS arrival onsite

On arrival to site the JMSS installers will sign in and communicate with site teams for the works to be undertaken on-site.

3

JMSS carries out scheduled works

The install teams will proceed with works booked in on schedule.

4

JMSS completion of works phase (erect or dismantle)

Installers will leave any materials not used or removed stacked neatly, banded and ready for transportation by the site telehandler to the designated lay down area.

5

JMSS handover

The installers will provide the site manager with a handover certificate to confirm the erection/dismantle has been completed correctly and inspected by the team leader.

6

JMSS departure from site

The site manager will undertake a handover inspection before entering the decking onto the scaffold register and opening it for safe usage.

STORAGE OF MATERIALS

Site storage involves the provision of adequate space, protection and control for materials, components and equipment that are to be kept on a construction site during the building process.

The location and size of space to be allocated should be planned carefully as part of an overall site layout plan and each site will present its own problems. Failure to adequately plan for storage space can result in congestion, or having more materials on site than storage space allows for. Materials and

equipment may need protection from theft and vandalism, particularly when left out in the open where they have the potential to be removed late at night by opportunistic thieves.



Banding Equipment

This equipment can be purchased by the site off JMAC Safety Systems on request. Banding the panels will make it easy for transporting pallets around site.

- ✔ Ensure that banding equipment is used after every erection and dismantle phase.

Pins

The storage of pins is recommended using a scaffolding fixing bin or mixing tubs. These containers are durable and easy to transport and move materials around site.

- ✔ Drill holes in bottom of container to allow for the drainage of water.



Legs

Correct method for stacking legs onto storage stillage and maximising the stillage to hold 102 legs. Stillages are standard issue from JMAC. The bottoms painted orange.

- ✔ Position the legs in rows of 7

Panels

Correct method of stacking panels onto pallet 25 high. Using the banding machine to secure the load to the pallet. Making it easy for transporting panels around site or back to a storage facility.

- ✔ JMSS install teams are responsible for banding pallets.



BOOKING IN WORKS PROCEDURE

JMAC Safety Systems are here to work alongside the site teams and offer support, knowledge and experience in the safe use and installation of the Macdeck System.

The operational team are available Monday to Friday to help with any queries, problems or feedback you may have. Our contracts manager will attend site to deliver an onsite training session with your site team on the first week of installation.

On this visit the following topics will be covered...

- Basic Do's & Don'ts
- How to Inspect the System and what to look for



If you have any questions, please feel free to call the JMSS team on 01642 563 696

BOOKING IN WORKS

To book in the Labour for your site please email: info@jmacsafety.com & state the following:

Plot Number
Floor Level (GF/FF)
Required installation date

Please allow 48 hours call off period for installations / dismantles or alternatively call the office on 01642 563696.

MINIMUM OF 2 PLOTS (EITHER ERECTION OR DISMANTLE)

Materials preferably the day before outside plots ready for the install teams to attend site and proceed with labour to prevent any standing time charges or abortive callouts. Also, in our pre start pack as below, we require the use of a Forklift Driver. The Internal block works needs to be at nine courses high for the system to be able to perform a push off. Please allow time for the blockwork to dry.

GENERAL REQUIREMENTS

Maximum Imposed Platform Load 2.0 Kn/m2 UDL (General Purpose Access Platform) All previously agreed delivery dates / parking arrangements, the intended area(s) of erection, phases of the works and access / egress for materials and operatives will be considered as acceptable and appropriate for the commencement of our proposed activity. However, any alterations or changes deemed necessary by our customer must be confirmed in writing to our office prior to commencement of our works and any such changes to be mutually agreed between both parties.

JMAC Safety Systems Ltd reserves the right to postpone our commencement date for delivery and erection/dismantle if such changes impose an unreasonable restriction upon our intended contract programed.

1

Access for Vehicles

Clear, unhindered and safe access/egress from the public highway to the block, plot or building is to be provided by the customer for a 7.5-ton vehicle, or similar, to the previously agreed offloading area.

2

Loading/Off-Loading

The client is responsible for the loading/off-loading of equipment to/from the designated storage or work area as agreed.

3

Storage

It is envisaged that the decking will be loaded straight onto loading bays for installation. When the decking is stripped the panels & legs need to be stacked neatly on wooden pallets & stillages and stored in a designated area identified by the client.

ACCESS / EGRESS TO PLOTS AT GROUND FLOOR

The following images are examples of what access requirements we deem acceptable for our operatives into ground floor plots: -



MOVEMENT / RAISING / LOWERING OF OUR MATERIALS

Agreed arrangements for the assistance of a fork lift truck (both with trained operators) must remain available at no cost to JMAC Safety Systems Ltd.

Our lightweight components can be manually handled by our erection team from the designated loading area on the scaffold or floor to the place of work and intended erection. However, the following information is to be used with conjunction with mechanical movement of our packed materials before the erection and after the dismantling phase of our activities.

Inspection

As part of our commitment, we are to carry out a weekly inspection of each safety decking platform erected in plots on a weekly basis and feedback our findings to the site team, this will be recorded and a copy will be sent to each respective site manager, to form part of your temporary works inspections as a 7 day check.

Our Macdeck safety decking system is the strongest injection moulded system on the market.

ACCESS / EGRESS CONTINUED...

The following images are examples of what is **not acceptable** for access: -




WHAT JMSS EXPECTS FROM THE CLIENT

- ✓ The minimum requirement for blockwork is 8+1 or 9 courses high.
- ✓ You must ensure that the JMSS team has clear access and egress to the plot.
- ✓ Materials to be stored in a designated area on site. (if applicable)
- ✓ Materials outside plots for arrival of labour only teams. (if applicable)
- ✓ The decking must NOT be altered in any way unless done so by a trained installer. This also includes the removal of pins and cam straps.
- ✓ The decking should never be overloaded (max 2.0kn/m)
- ✓ Safe loading guidelines to be adhered to at all times.

WHAT THE CLIENT SHOULD EXPECT FROM JMSS

- ✓ A visual inspection of the system prior to commencement of works for any defects or damaged items.
- ✓ JMAC installers will inform the client immediately if they identify a hazard on the site.
- ✓ All installers are fully CSCS trained and competent in the safe use and installation of the MacDeck system.


**DID YOU
KNOW?**

We have designed a state of the art loading hatch for safe access and egress between floor levels.

[CLICK HERE
TO FIND OUT MORE](#)

SAFETY CONSIDERATIONS

UNDER NO CIRCUMSTANCES SHOULD ANYONE:

- A. Remove any pins
- B. Move or dislodge the supports or panels in any way
- C. Remove any panel ties.
- D. Throw any of the MACDECK system from the scaffold or plot.
- E. Climb or descend a scaffold by unsuitable means i.e. only the use of a handed over scaffold tower system or scaffold ladder access is permitted.
- F. Overload the decking system (2Kn/m² UDL) with equipment or materials
- G. Where access / egress is from extended outer walls, then an intermediate step must be provided to eliminate the need to jump down onto the decking system.

If any of the above occurs it may jeopardise the restraint and structural integrity of the system.

The only exception being, the temporary removal of an isolated deck panel for the provision of an access ladder. Once the ladder has been positioned, secured and access to the deck achieved, the ladder must be raised up and placed upon the deck. The deck panel must then be immediately replaced to ensure that no openings remain at risk of falls to persons.

Only an authorised, trained and competent person must carry out any work or such activity.

NOTE! General access/egress and working beneath the area of our decking system should be restricted. However, if ongoing works dictate otherwise, it will remain the responsibility of our customer to risk assess the activities to be carried out and implement control measures as deemed appropriate.

ADDITIONAL INFORMATION

Falls of either materials or personnel onto our 'safety deck system' must be reported immediately to a representative of JMAC SAFETY SYSTEMS LTD and works suspended until after the system has been thoroughly inspected and approved by a competent representative of **JMAC Safety Systems Ltd** as fit for continued use.

Walls: It shall be assumed that all perimeter walls offering lateral restraint to our 'MacDeck Safety Deck System', being brickwork, block work, concrete or other building fabric, is fully dried out and adequately stable without detriment or movement to support our MacDeck Safety Deck System.

Base Floor Level Foundations: The base/floor level foundations on which our 'Safety Deck System' is to be erected must be firm and level, such as in-situ concrete, precast flooring or suitable plywood sheets over timber joists including stairwells. All obstructions such as unused packs of blocks, bundles of timber, window frames or general site builder's debris must be removed by the customer prior to installation.

Roof Truss/Roof Void Installation: It is extremely important that our 'Safety Deck System' is enclosed or encased within four vertical supports (i.e. four walls) unless agreed beforehand at the upper deck level of 2.0m to offer the correct lateral restraint for its continued integrity. Where the roofline drops below 2.0m there will effectively remain no adequate support on that side of the room. Where this occurs, a scaffold ring or horizontal rail at the height of our 'Safety Deck System' panel will be required. Buckled cam straps are then used to "tie in" the panel into the rail support. This scaffold ring or support rail must be provided by the customer, free of charge to **JMAC Safety Systems Ltd**.

If four walls do not support the system – this needs to be assessed before work commences to determine the best way of supporting the system.

House types with three supporting walls shall be supported by scaffold frame to prevent lateral movement.

MATERIALS SPECIFICATION

The MacDeck Safety Decking System will be erected using the following proprietary components:

Decking Panels

PANEL TYPE	SIZE (METERS)	WEIGHT (KG)
Full Panel	1m x 1m	10kg
Intermediate Panel	1m x 0.75m	8kg
Half Deck Panel	1m x 0.5m	6kg

System Support Framework

LEG TYPE	DIA (MM)	WEIGHT (KG)
1.5m - Standard Leg	65mm x 65mm	1.2kg
1.8m - Standard Leg	65mm x 65mm	1.35kg
2.0m - Standard Leg	65mm x 65mm	1.5kg
1.8m - 3.0m Extendable Leg	65mm x 65mm	*
Base/Head Unit	210mm x 210mm	0.5kg



FIXINGS

Universal Base & Headplate

Four way jointer manufactured from moulded plastic secured to top & base of legs, complete with cutaway slots for the corner attachment of four adjacent deck panels.

Plastic Restraint Pins

For securing the attachment of panels to the 'head plates' on top of the legs and adjacent panels.

Camstraps

For restraint and attachment of bridging deck panels for 'make-up' bays to suit distance between perimeter walls and irregular shaped voids. Camstraps are also used to allow the system to be secured against four walls offering stability to the erected system.



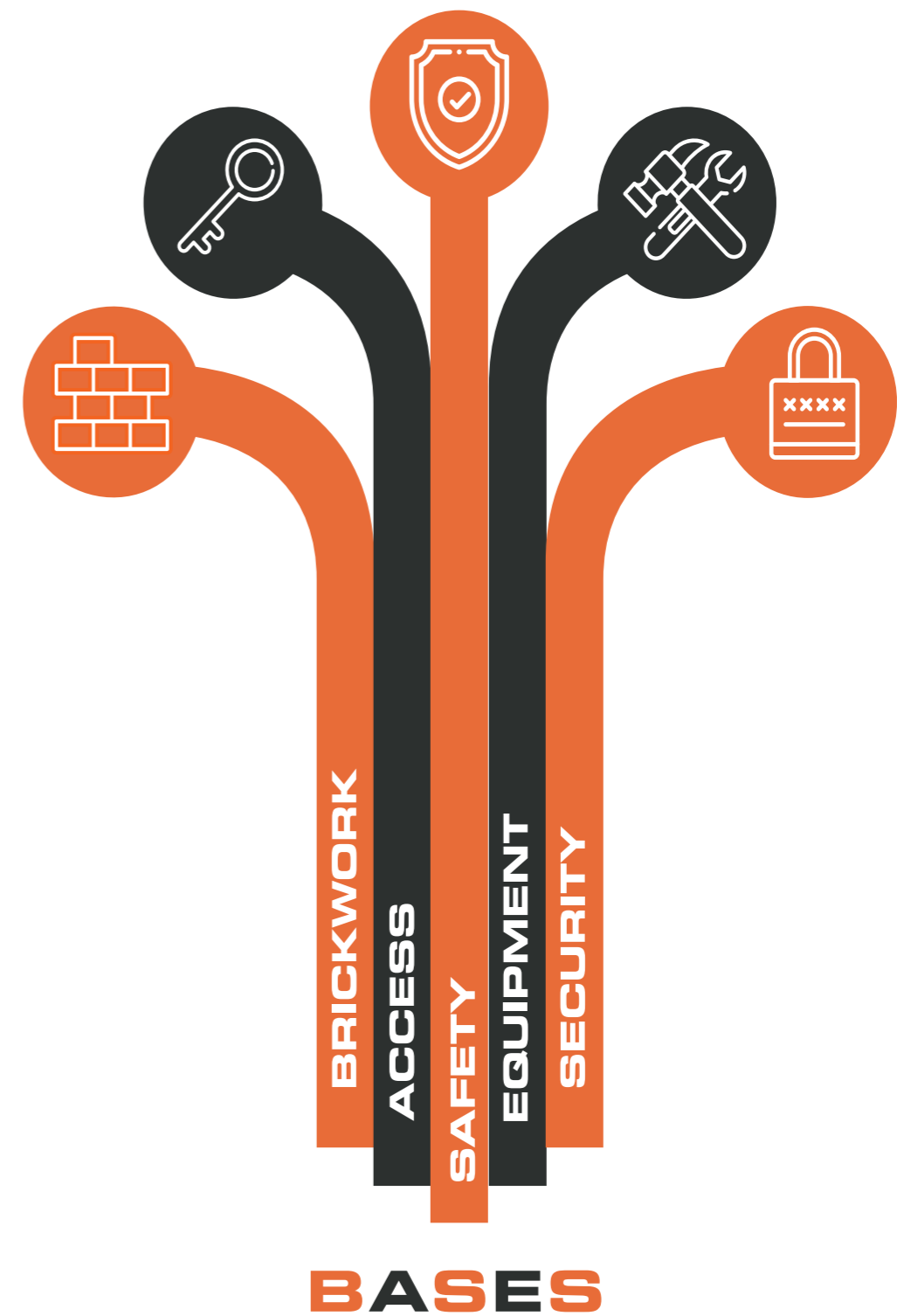


Personal Protective Equipment (PPE)

To safely install or dismantle The MACDECK System all operatives must ensure correct Personal Protective Equipment (PPE) is worn at all times. PPE is mandatory and must be in line with manufacturers standards.

Eyewear Protection (for dismantling)
High Vis-Vest / Jacket
Steel Toe Cap Boots
Hard Hat
Gloves

COVER YOUR BASES



COVER YOUR BASES

As part of managing the health and safety on your site, you must control the risks in the workplace. To do this you need to think about what might cause harm to people and decide whether you are taking reasonable steps to prevent that harm.

The BASES risk assessment is not about creating huge amounts of paperwork, but rather about identifying sensible measures to control the risks when putting together the MacDeck System. You are probably already taking steps to protect your employees, but by following the BASES guide, you will be able to assess whether you

have covered all that you need to. A good starting point is to walk around your workplace and think about any hazards, is the brickwork up to height? Are there any trades working above you? Follow the guide below to make sure your covered.

01 BRICKWORK

- Is the brickwork up to height?
- Is the brick/blockwork cured properly and is the structure adequate to support the MACDECK system?
- Are there 4 walls for lateral support?

03 SAFETY

- Are you trained to install the MACDECK system? If not, you will require training to do so.
 - Are there any other trades working above you?
- Do you and your work team have the correct PPE and are you using it?

05 SECURITY

- Did you know our panels can be branded with your company information for extra security and reduce the likelihood of theft?

02 ACCESS

- Is the access route to the area of erection clear and safe?
- Is the room you are building in clear of debris? Is the room you are building in safe to work in?

04 EQUIPMENT

- Is the correct equipment on-site?
- Is the equipment in good working order and free from damage?
- Are all of the components in the correct position and correctly secured?
- Before dismantling the MACDECK, has it been tampered with?
- Before dismantling, is the deck clean and free of debris?
- Never exceed the safe working load of 2kN/m² square (202.66 kg/m square)

The strongest injection moulded system on the market

Our Macdeck safety decking system is the strongest injection moulded system on the market. We manufacture our system in the UK using state of the art facilities. Ensuring the highest quality standards are achieved, from early design stage right through to final product sign off.

For more information or to book your demonstration please visit our website www.jmacsafetysystems.co.uk or contact us on 01642 563696 sales@jmacsafetysystems.co.uk



INSTALLATION GUIDE

Macdeck has you covered with three different sized panels: 1m x 1m, 1m x 750mm and 1m x 500mm. Whatever the shape or size of your project, Macdeck will allow the flexibility for you to assemble the system regardless of the room configuration. The lightweight panels and design of the handles allow the Macdeck to not only be carried easily, but also conform to the manual handling regulations.

STEP ONE

1

All legs should be made up with the base and heads secured with a pin.

Start by standing four legs in one corner of the room approximately a meter apart.



STEP TWO

2

Lift a panel and ensure the panel sits securely in one corner of the base and head unit.



STEP THREE

3

Lean two more legs against the existing legs, ready to install the next panel.



STEP FOUR

4

Always make sure you have hold of the centre of the board for stability when lifting.



STEP FIVE

5

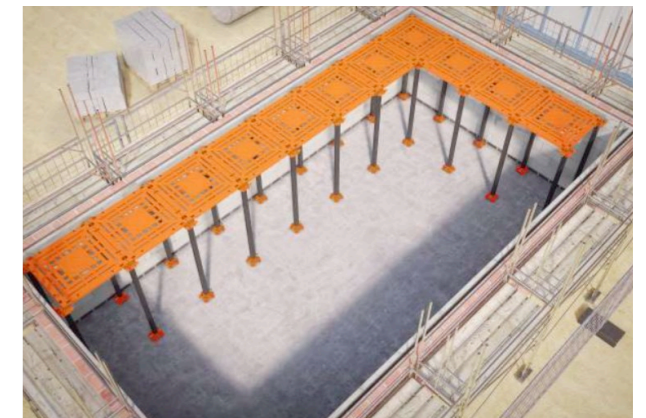
Continue this process, working to form an L shape down 2 sides of the plot.



STEP SIX

6

By erecting in an L shape, this will show you where your overlap section will be.



STEP SEVEN

7

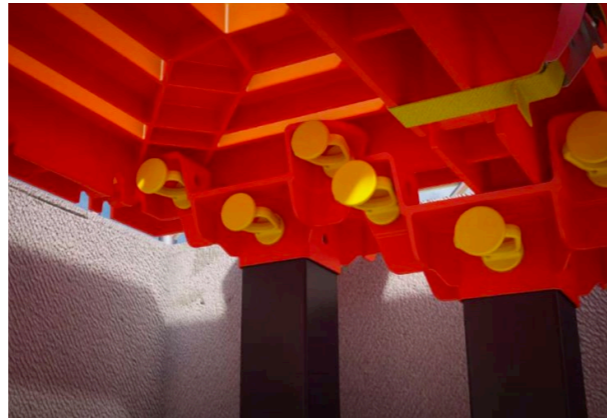
Always ensure there are two pins in place to secure the panels to the base and head units.



8

STEP EIGHT

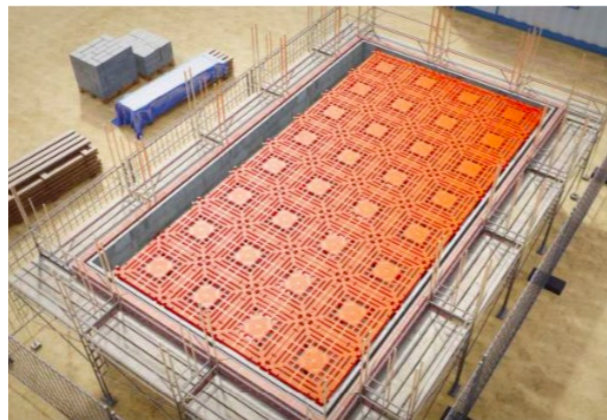
Always pin as you erect to speed up the installation process and ensure nothing is missed.



9

STEP NINE

Most plots will require an overlap to cover any remaining gaps in the decking. These should be used as a push off - meaning that they make the decking secure.



10

STEP TEN

When approaching an overlap section, place the panel flush against the external wall.



11

STEP ELEVEN

The leg that supports the overlapped section needs an additional base and head to allow for the height difference, as shown above.

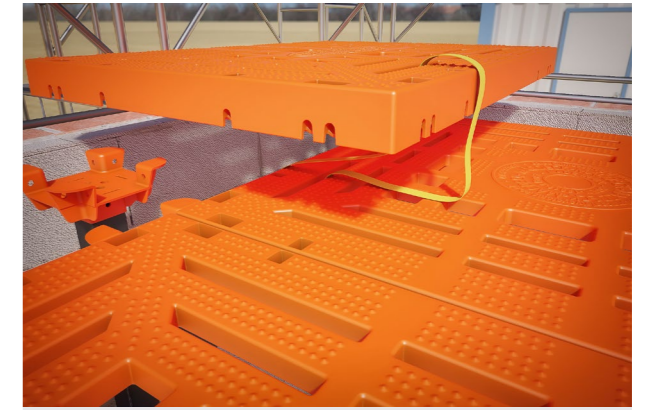
Place the overlapped leg inside of the panel and ensure that the base and head unit is fixed with a pin.



12

STEP TWELVE

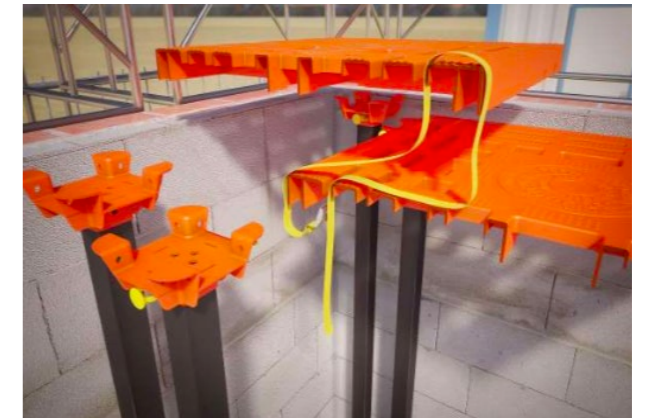
When securing an overlapped section with camstraps, your operatives must ensure that they use the correct 'S' shaped technique.



13

STEP THIRTEEN

The buckle of the camstrap must always be facing the external wall.



14

STEP FOURTEEN

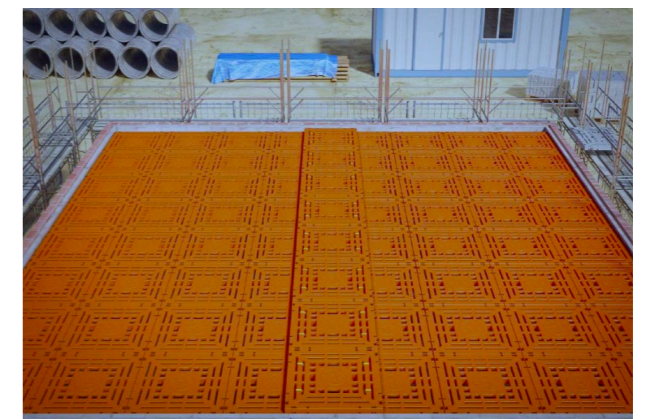
This allows the overlapped board to push in the direction of the external wall and braces the system to stop any lateral movement.



15

STEP FIFTEEN

If you are working with clients that will only build blockwork to 8 course height. The solution is to overlap panels down the centre. The overlaps will need two cam straps on either side of the panel - equating to four cam straps in total. The 'S' technique still applies, however, the buckles need to face towards each other. This ensures that the panels are braced to the external walls.



DISMANTLING INFORMATION

Before dismantling; ensure the deck is clean, free of all materials or debris and complete i.e. butted to four walls. Operative to hold system in place whilst cam straps are removed until system is fully dismantled.

Dismantling is simply the reverse of the installation process. These simple points must be followed:

- Place the panels and legs close to the extraction point.
- Observe your manual handling procedures.
- Use mechanical lifting aids to lift components down from high levels.
- Store and band as required by JMSS installers, ready for next use.
- Use the kinetic lifting technique when lifting heavy loads.
- Wear eye protection in case of debris on the deck.
- Remove the cam/securing strap.
- Remove the securing pins.
- Remove the panels and legs.



We have carried out robust and rigorous testing to ensure the absolute safety & durability of Macdeck.

COMPONENT DEFECT INFORMATION

The following information provided by JMAC Safety Systems is to offer a reasonable and practicable guide to assist with identification of defective components.

Prior to dismantling, the deck should be inspected for damaged or defected stock. If there appears to be any damages identified that were not there at the point of handover, this will need to be reported to the site team to prevent any further misuse.

- Check for any debris; bricks, blocks, scaffolding or timbers.
- Check for damage to the MacDeck components.
- Make provision for dismantling and removal from site.

COMPONENT DEFECT INFORMATION

BASE & HEADS - Cracked and/or split plates/casings and supporting corner pads.

LEGS - Bowed, split, bucked, kinked along their length. Any cuts or holes within the unit and/or any chemical contaminants, burns, nails etc.

PANELS - As with the leg units and in addition, any deflected slats, ripped and worn finishing to the slats. The slat retaining screws must be fully secured to the edge of the frame and screw holes should be intact. No damage/cuts or obvious deterioration of panels.

CAMSTRAPS - Worn and frayed or part cut through.

PINS - Snapped or cracked.

FAULTS	DAMAGE CAUSED BY
Damaged legs	Cracks/Splits (Impact/Overloading)
Damaged base or head plates	Cuts (Knife/saw / power tools etc.)
Damaged panels	Penetrations (nails/ power tools etc.)
Cut cam/securing straps	Penetrations (nails/ power tools etc.)
Broken securing pins.	Penetrations (nails/ power tools etc.)

NOTE: This list is not exhaustive and is intended as a basic guide. If you are in any doubt as to the integrity of any of the system parts or the system as a whole, you should seek advice from JMAC Safety Systems Personnel.



PRE HANDOVER INSPECTION

Prior to the handover certificate being signed by the site team the following checks need to take by a JMSS representative on the plot to ensure the following:

- Check the securing pins are in position; legs, base & heads
- Check all legs are straight
- Check all camstraps are tight
- Check that overlapped sections have a extra base & head attached.
- Check there are no gaps greater than 100mm
- Check there is no movement or swaying on the deck
- The Macdeck System should not be installed as a free standing system.



**DANGER
PLATFORM
INCOMPLETE
DO NOT USE!**

If a plot is incomplete, a platform incomplete sign **MUST** be placed outside the plot.

This allows all labourers on site to know that the decking is unsafe to work on.

As soon as a plot has been either erected or dismantled a handover certificate should be completed by the install team. Decking needs to be checked over by the site team/client representative who understands how to inspect the system and signed over.

The handover is a legal document that is signed by both parties. Each party receives a copy of the handover as evidence of work completed.

Please see handover document example on the next page.

PRE HANDOVER INSPECTION

Upon completion of erection/dismantle of the MACDECK System, it is essential the following procedures are carried out:

- The structure is fully inspected and handed over to the client.
- Daily visual inspection should be carried out before use.
- The structure is inspected every 7 days after the date of erection.
- The structure is fully inspected after adverse conditions, such as overloading, impact, bad weather and unsafe working practises.
- The structure is fully inspected before dismantle.

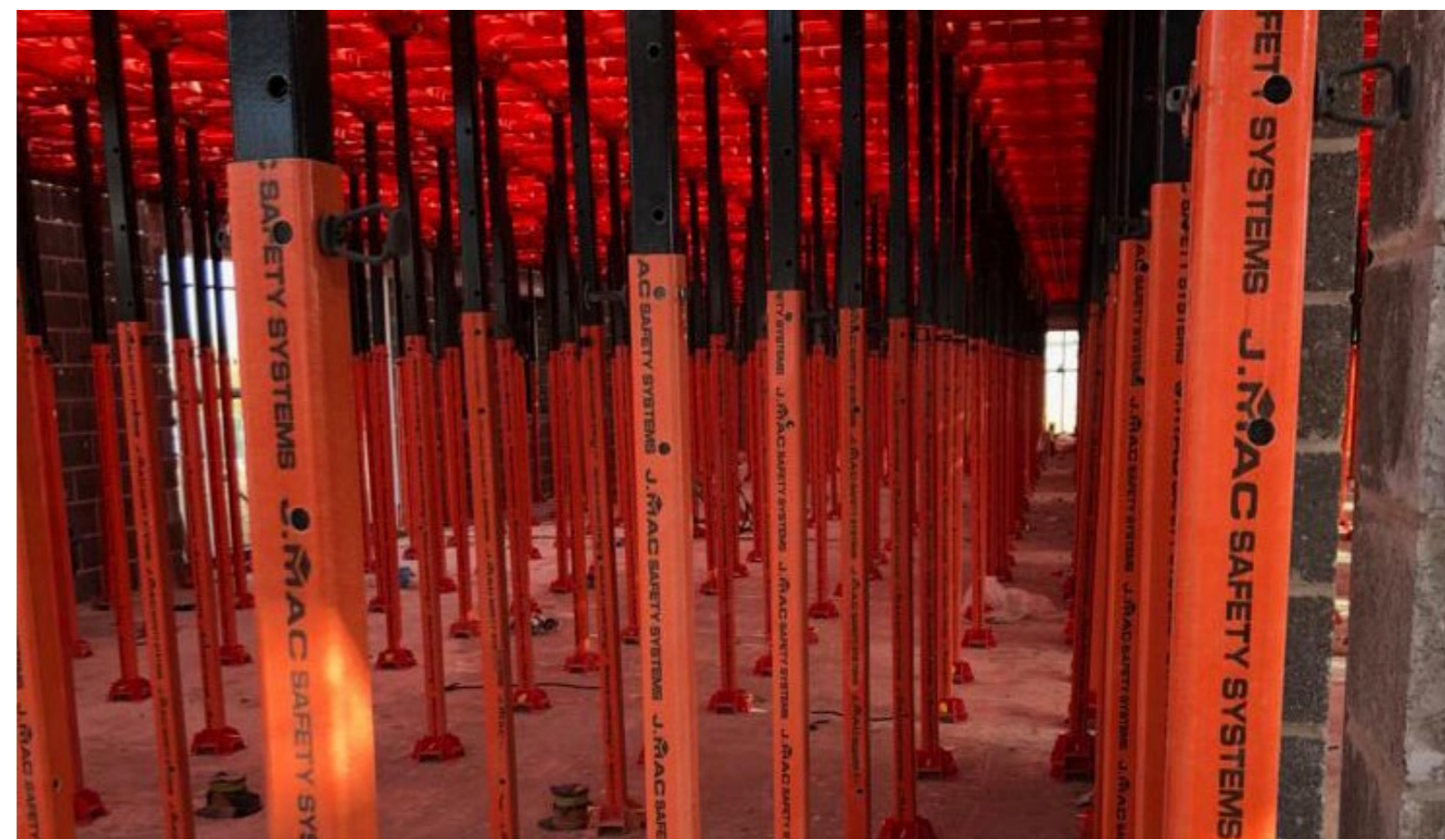
The inspections should include identification of damaged and defective parts, interference with the structure by others, overloading, unprotected edges, instability of the whole, or part of, the system, undermining of the structural legs.



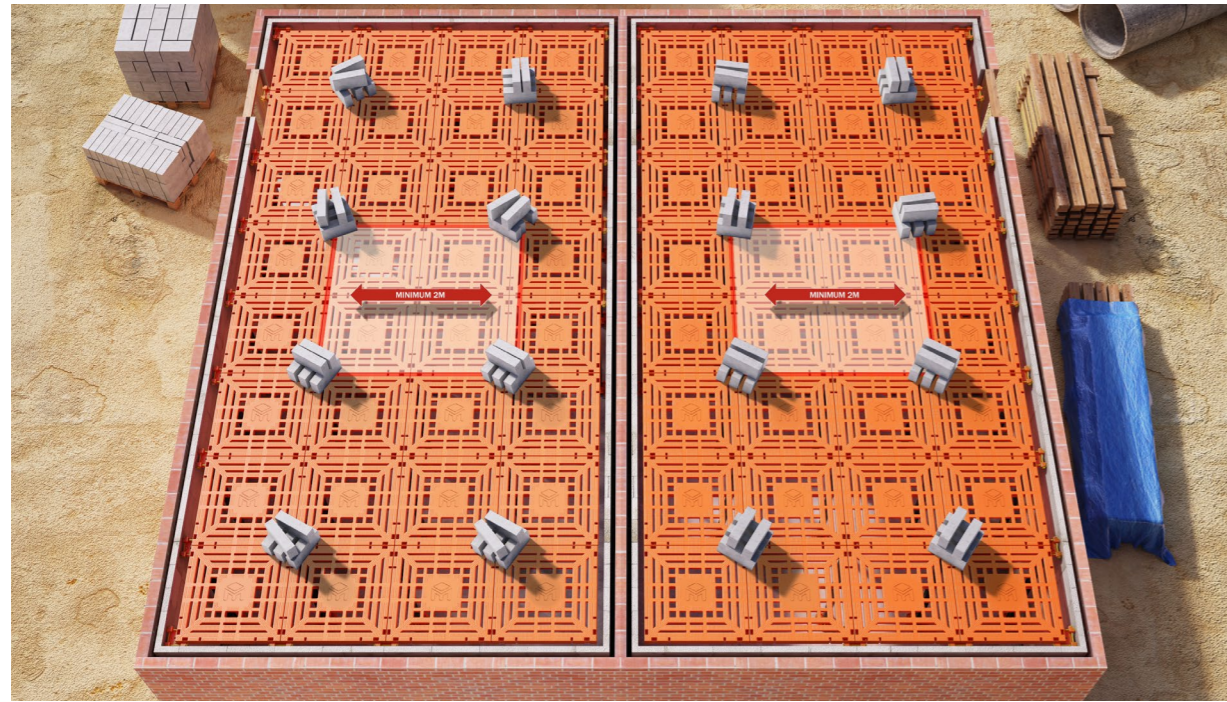
MACDECK is NOT a free standing system it must be contained.

Once you are happy that the deck is safe you may inspect it from above (if safe to do so). Scaffolding must be erected prior to accessing the deck to prevent falls around the perimeter.

You can see very easily from on top of the deck whether or not the securing pins & securing straps are in position. When YOU are happy that the deck is correctly installed and safe to access. Hand it over to the client/site management.



SAFE LOADING GUIDE FOR CONCRETE FLOORS



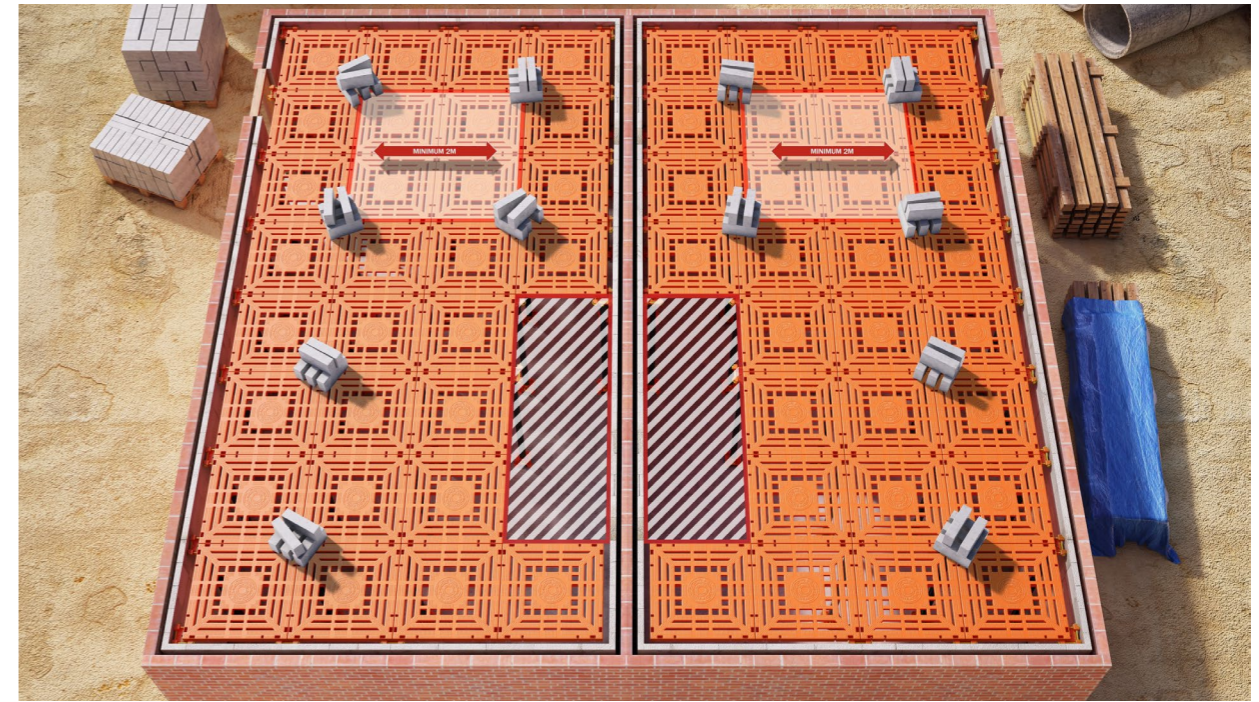
The above diagram shows the Macdeck Safety System being loaded out correctly. As a general rule on all sites, the Macdeck System should be loaded out safely with **5 NUMBER BLOCKS ONLY!** Directly above the legs spaced every 2 meters apart (on alternate legs) and must not exceed this amount.

Safety Considerations when loading out

Ensure blocks are positioned above alternate legs (no closer than 2 meters apart) and loaded over each leg as shown in the diagram above.

- Do not overload the working platform
- Monitor the safe working load of the platform and sub-contractors using it.
- Do not load in the centre of the panels.
- Do not amend, alter or remove any component of the system.

SAFE LOADING GUIDE FOR JOIST FLOORS



The above diagram shows the Macdeck Safety System being loaded out correctly. The system requires no propping to the underside of the system.

As a general rule on all client sites, the Macdeck System should be loaded out safely with **5 NUMBER BLOCKS ONLY!** directly above the legs spaced every 2 meters apart (on alternate legs) and must not exceed this amount.

Safety Considerations when loading out

Ensure blocks are positioned above alternate legs (no closer than 2 meters apart) and loaded over each leg as shown in the diagram above.

- Do not overload the working platform
- Monitor the safe working load of the platform and sub-contractors using it.
- Do not load in the centre of the panels.
- Do not load over the staircase/stairwell areas as highlighted in above diagram
- Do not amend, alter or remove any component of the system.

DUROX COURSING BRICKS WORKING SIZE = 215MM X 70MM

THICKNESS	WEIGHT (KG)	AVERAGE MAN WEIGHT	TOTAL NUMBER PER M ²
100mm	0.71kg	80kg	70
115mm	0.82kg	80kg	60
125mm	0.89kg	80kg	60
150mm	1.07kg	80kg	50

SUPABLOC 700

THICKNESS	WEIGHT (KG)	AVERAGE MAN WEIGHT	TOTAL NUMBER PER M ²
115mm	6.6kg	80kg	18
125mm	7.2kg	80kg	16
130mm	7.5kg	80kg	16
140mm	8.1kg	80kg	14
150mm	8.7kg	80kg	13
250mm	14.4kg	80kg	8

SUPABLOC 400

THICKNESS	WEIGHT (KG)	AVERAGE MAN WEIGHT	TOTAL NUMBER PER M ²
100mm	9.3kg	80kg	12
115mm	10.7kg	80kg	11
125mm	11.7kg	80kg	10
140mm	13.1kg	80kg	9
150mm	14.0kg	80kg	8
190mm	17.7kg	80kg	6
200mm	18.7kg	80kg	6
215mm	20.1kg	80kg	5
280mm	26.1kg	80kg	4

TRAINING AND PRODUCT AWARENESS ACKNOWLEDGEMENT DECLARATION

Macdeck Safety induction and basic familiarisation training. This should be carried out as soon as practicable with the site teams who will be involved in managing and controlling the use of the Macdeck System on a day to day basis. This familiarisation should include but not be limited to the following ten point check:

- 1) Product Awareness and Familiarisation**
- 2) Storage of Materials**
- 3) Booking In Procedures**
- 4) Pre-Start Information | Cover your BASES | Installing | Dismantling Defects**
- 5) Inspection Procedure**
- 6) Handover Procedure**
- 7) Loading Information**
- 8) Scaffolding Designs (to work in co-ordination with Clients Housetypes)**
- 9) Contact Details**
- 10) Acknowledgement & Understanding Declaration**

I hereby confirm that I have read, understood the use and management of the Macdeck Safety System.

For and on Behalf of Site Representative: Date

Name of Site Representative:.....

Signature of Site Representative:.....

For and on Behalf of JMac Safety Systems: Date

Name of Manager:.....

Signature of Manager:.....



J.MAC

SAFETY SYSTEMS



Contact Us

01642 563 696



sales@jmacsafety.com
www.jmacsafety.com



JMAC Safety Systems
Portrack Grange Road
Stockton-on-Tees, TS18 2PH

