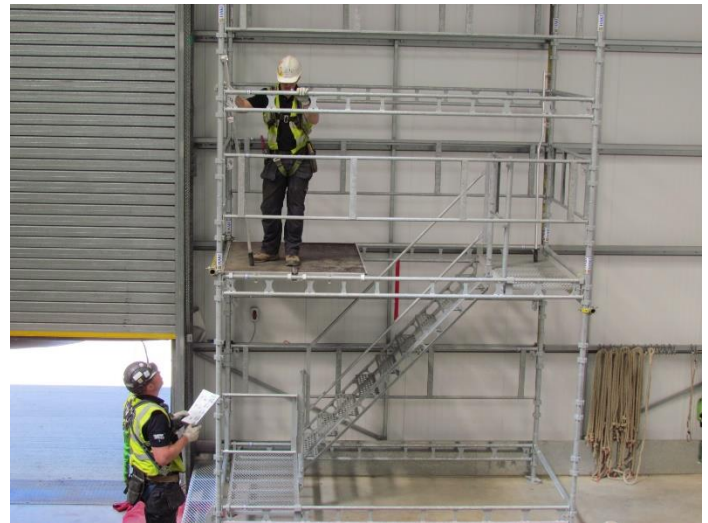


# FASET Bulletin ST01 (Revision 1)

## Skill, Knowledge, Experience & Training for Temporary Stair Tower Installers

To determine the competency of persons who install Temporary Stair Towers, the installation company must ensure that the Operatives hold the necessary skills, knowledge, experience and training certification to undertake the task.

Temporary Stair Towers are typically installed to provide a safe means of access onto a floor or roof structure. The system comprises of a proprietary system tied in to the structure using tube and fitting components to tie them in to the structure. The HSE have clarified that the Work at Height Regulations make it clear “that a scaffold has a set meaning and that just because edge protection uses tube and fitting scaffold components does not make that a scaffold”. On this basis, just because stair towers use tube and fitting scaffold components does not make them a scaffold either.



Whilst the strength and frequency of ties are defined within the MIMs, the detail of how this is achieved needs to be evidenced by a Temporary Works Design.

Installers of Temporary Stair Towers must:

- Ensure that the installation is carried out in accordance with the Manufacturers Information Manual
- Tie it in to the structure following a specific temporary work design in accordance with BS 5975: 2008+A1: 2011 Code of practice for temporary works procedures and the permissible stress design of falsework
- Hold either a:
  - CSCS Blue Skilled Worker FASET Stair Tower Installer card\*
  - CISRS (specific system endorsed) card\*\*

\* The FASET Stair Tower course includes both theoretical AND practical tuition. The card is only issued **after** the operative has demonstrated competence through assessment.

\*\* The tie details securing Temporary Stair Towers to a structure are covered within the FASET Stair Tower training syllabus; and therefore a Construction Industry Scaffolding Registration Scheme (CISRS) SkillCard or similar worker is NOT required to perform this task.

For more information about FASET, contact:

FASET  
PO BOX 138, WHITCHURCH  
SHROPSHIRE. SY13 9AD

T +44 (0)1948 780652  
E [enquiries@faset.org.uk](mailto:enquiries@faset.org.uk)  
W [www.faset.org.uk](http://www.faset.org.uk)

**FASET**  
Fall Arrest Safety Equipment Training